

Cedar County, Iowa
 Horizontal Datum: **NAD 83(2011)** - Vertical Datum: **NAVD 1988**
 Iowa State Plane South Zone (1402)
 Iowa Regional Coordinate System, Zone 10. Cedar Rapids (LCC)
 US Survey Feet
2015

Point Name: **5020**

Designation: 2000-101 Muscatine Co GPS Control Pt (Set by ASI in 2000)

NAD 83(NA2011) Latitude: **N41°35'48.21781"** Longitude: **W91°08'39.74740"**
 NAVD 88 Ortho Height: **736.52sft** Ellip. Ht: **629.19sft** **Geoid12A**

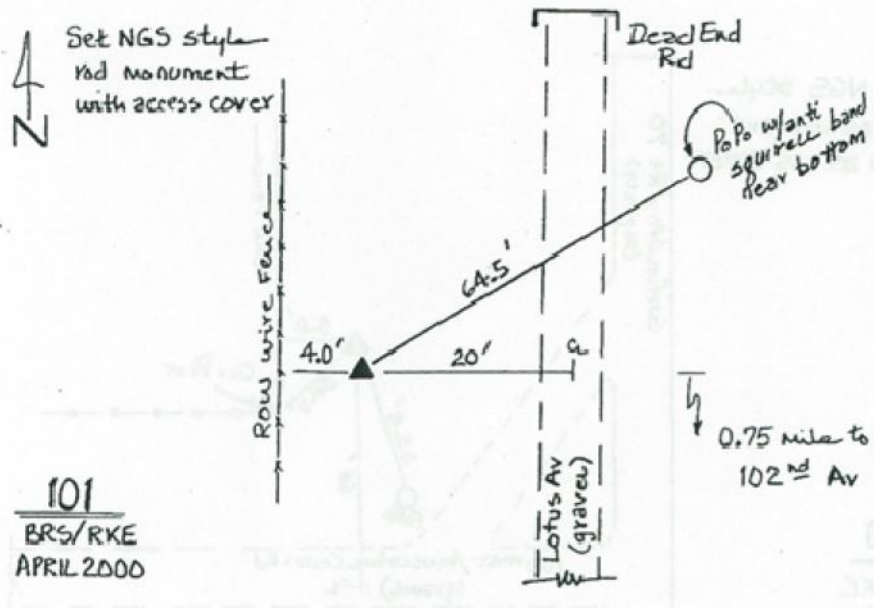
Iowa South Zone (1402) Northing: **590473.00sft** Easting: **2284651.97sft**
 Mapping Angle: **1°33'06"** Combination Scale Factor: **0.999942171**

IaRCS Zone 10 Northing: **7914214.282sft** Easting: **20642865.309sft**
 Mapping Angle: **00° 20' 54"** Combination Scale Factor: **0.999998348**

Monument Type: 5/8" dia. driven aluminum rod with a 2-1/2" dia. aluminum cap and permanent magnet encased in a 5" dia. PVC pipe with an aluminum access cover.

To Reach: 20ft W of Lotus Ave, approx. 0.75 mi N of 102nd near the N 1/4 cor Sec 1 T78N R3W.

Date Printed August 9, 2000



This document was prepared by Dan Corbin, Inc. on September 30, 2015 for Cedar County, Iowa.