

Cedar County, Iowa

Horizontal Datum: **NAD 83(2011)** - Vertical Datum: **NAVD 1988**
Iowa State Plane South Zone (1402)
Iowa Regional Coordinate System, Zone 10. Cedar Rapids (LCC)
US Survey Feet
2015

Point Name: **5022**

Designation: 2000-103 Muscatine Co GPS Control Pt (Set by ASI in 2000)

NAD 83(NA2011) Latitude: **N41°35'38.96991"** Longitude: **W90°53'58.71279"**
NAVD 88 Ortho Height: **684.64sft** Ellip. Ht: **577.10sft** **Geoid12A**

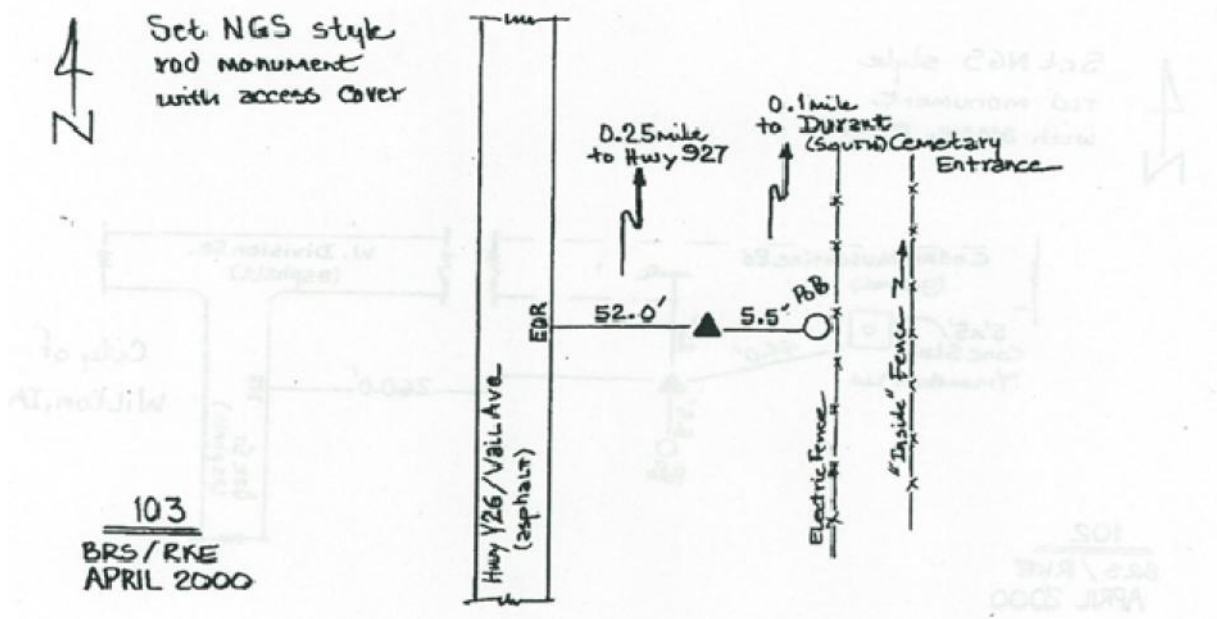
Iowa South Zone (1402) Northing: **591444.11sft** Easting: **2351592.16sft**
Mapping Angle: **1°42'46"** Combination Scale Factor: **0.999944348**

IaRCS Zone 10 Northing: **7913780.590sft** Easting: **20709814.923sft**
Mapping Angle: **00° 30' 42"** Combination Scale Factor: **1.000001028**

Monument Type: 5/8" dia. driven aluminum rod with a 2-1/2" dia. aluminum cap and permanent magnet encased in a 5" dia. PVC pipe with an aluminum access cover.

To Reach: 50ft E of Y26, approx. 0.25 mi S of Hwy 927 near the NW cor Sec 6 T78N R1E.

Date Printed August 9, 2000



This document was prepared by Dan Corbin, Inc. on September 30, 2015 for Cedar County, Iowa.