

Cedar County, Iowa
Horizontal Datum: **NAD 83(2011)** - Vertical Datum: **NAVD 1988**
Iowa State Plane South Zone (1402)
Iowa Regional Coordinate System, Zone 10. Cedar Rapids (LCC)
US Survey Feet
2015

Point Name: **5023**

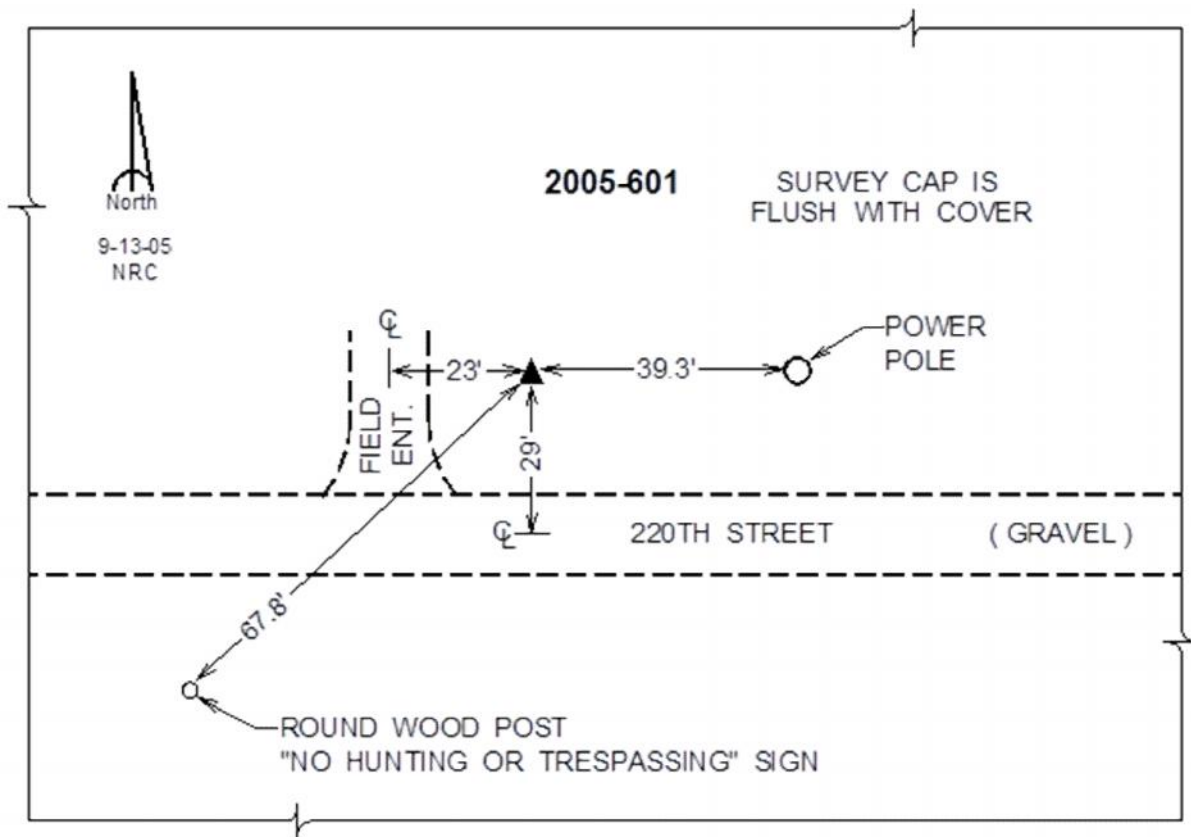
Designation: 2005-601 Scott Co GPS Control Pt (Set by DCI in 2005)

NAD 83(NA2011) Latitude: **N41°46'17.85641"** Longitude: **W90°54'18.42184"**
NAVD 88 Ortho Height: **757.56sft** Ellip. Ht: **650.38sft** **Geoid12A**

Iowa South Zone (1402) Northing: **656037.82sft** Easting: **2348166.44sft**
Mapping Angle: **1°42'33"** Combination Scale Factor: **0.999966909**

IaRCS Zone 10 Northing: **7978434.489sft** Easting: **20707744.090sft**
Mapping Angle: **00° 30' 29"** Combination Scale Factor: **0.999989427**

Monument Type: Berntsen Top Security Rod Monument with a 2-1/2" dia. domed survey cap and permanent magnet encased in a 5" dia. PVC pipe with a NGS style alum. access cover.



This document was prepared by Dan Corbin, Inc. on September 30, 2015 for Cedar County, Iowa.