

**Cedar County, Iowa**  
 Horizontal Datum: **NAD 83(2011)** - Vertical Datum: **NAVD 1988**  
 Iowa State Plane South Zone (1402)  
 Iowa Regional Coordinate System, Zone 10. Cedar Rapids (LCC)  
 US Survey Feet  
**2015**

Point Name: **5025**

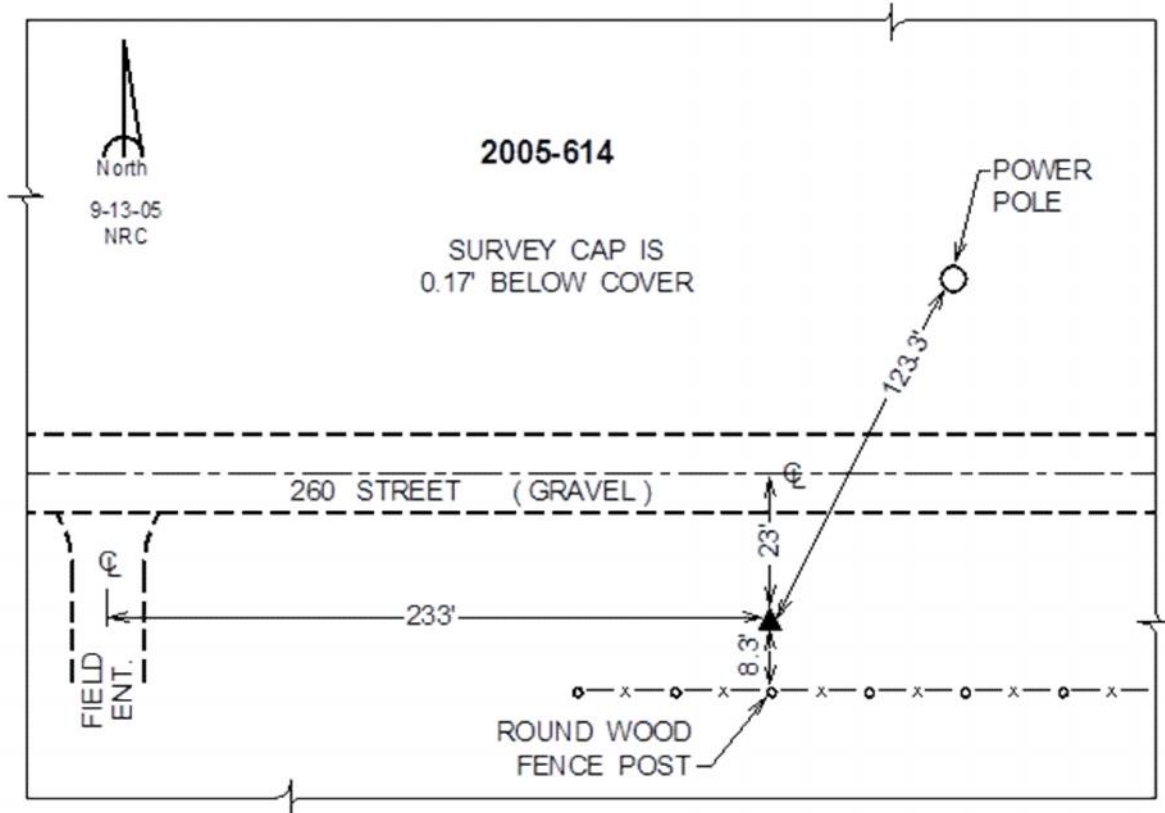
**Designation:** 2005-614 Scott Co GPS Control Pt (Set by DCI in 2005)

NAD 83(NA2011) Latitude: **N41°41'02.72197"** Longitude: **W90°53'35.03689"**  
 NAVD 88 Ortho Height: **776.12sft** Ellip. Ht: **668.77sft** **Geoid12A**

**Iowa South Zone (1402)** Northing: **624252.50sft** Easting: **2352408.31sft**  
 Mapping Angle: **1°43'02"** Combination Scale Factor: **0.999951975**

**IaRCS Zone 10** Northing: **7946566.239sft** Easting: **20711318.768sft**  
 Mapping Angle: **00° 30' 57"** Combination Scale Factor: **0.999991346**

**Monument Type:** Berntsen Top Security Rod Monument with a 2-1/2" dia. domed survey cap and permanent magnet encased in a 5" dia. PVC pipe with a NGS style alum. access cover.



*This document was prepared by Dan Corbin, Inc. on September 30, 2015 for Cedar County, Iowa.*