

Cedar County, Iowa
Horizontal Datum: **NAD 83(2011)** - Vertical Datum: **NAVD 1988**
Iowa State Plane South Zone (1402)
Iowa Regional Coordinate System, Zone 10. Cedar Rapids (LCC)
US Survey Feet
2015

Point Name: **5026**

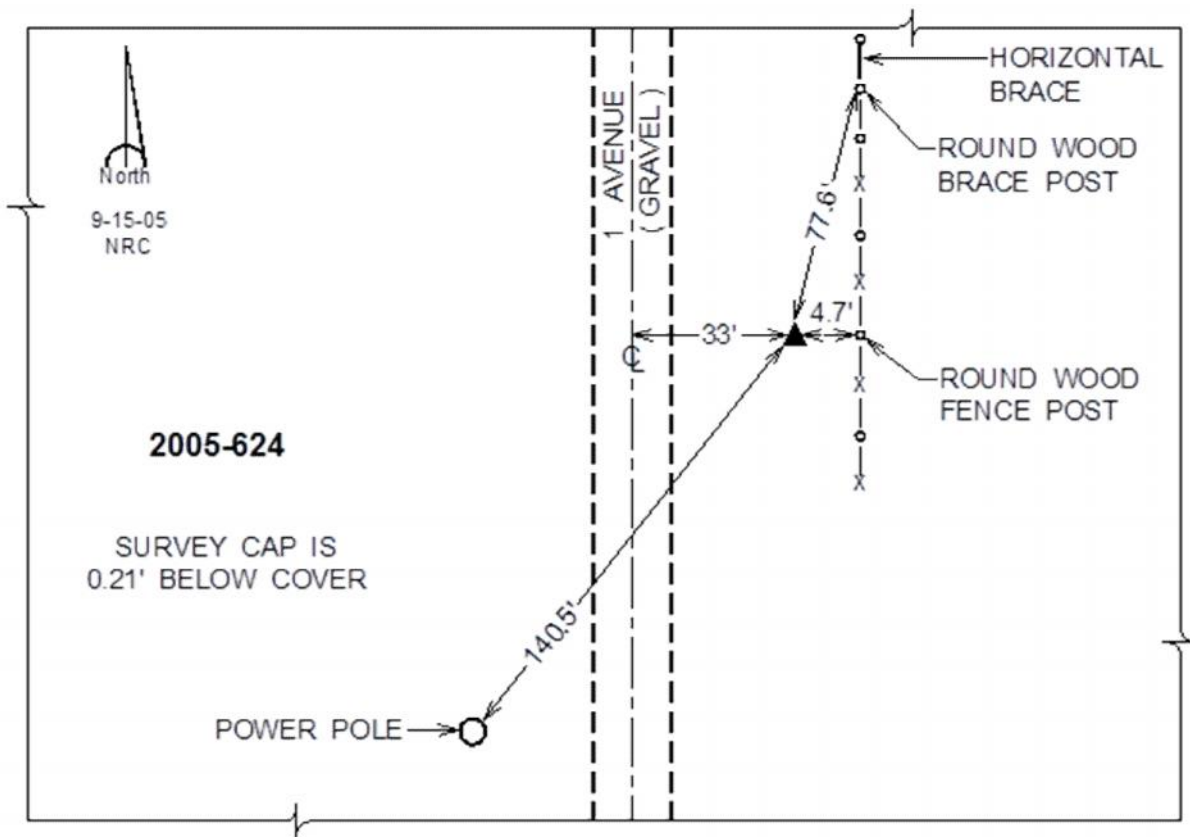
Designation: 2005-624 Scott Co GPS Control Pt (Set by DCI in 2005)

NAD 83(NA2011) Latitude: **N41°38'07.81613"** Longitude: **W90°53'57.87149"**
NAVD 88 Ortho Height: **726.41sft** Ellip. Ht: **618.95sft** **Geoid12A**

Iowa South Zone (1402) Northing: **606504.97sft** Easting: **2351205.69sft**
Mapping Angle: **1°42'47"** Combination Scale Factor: **0.999947562**

IaRCS Zone 10 Northing: **7928847.036sft** Easting: **20709744.283sft**
Mapping Angle: **00° 30' 42"** Combination Scale Factor: **0.999996287**

Monument Type: Berntsen Top Security Rod Monument with a 2-1/2" dia. domed survey cap and permanent magnet encased in a 5" dia. PVC pipe with a NGS style alum. access cover.



This document was prepared by Dan Corbin, Inc. on September 30, 2015 for Cedar County, Iowa.