

Cedar County, Iowa
Horizontal Datum: **NAD 83(2011)** - Vertical Datum: **NAVD 1988**
Iowa State Plane South Zone (1402)
Iowa Regional Coordinate System, Zone 10. Cedar Rapids (LCC)
US Survey Feet
2015

Point Name: **6002**

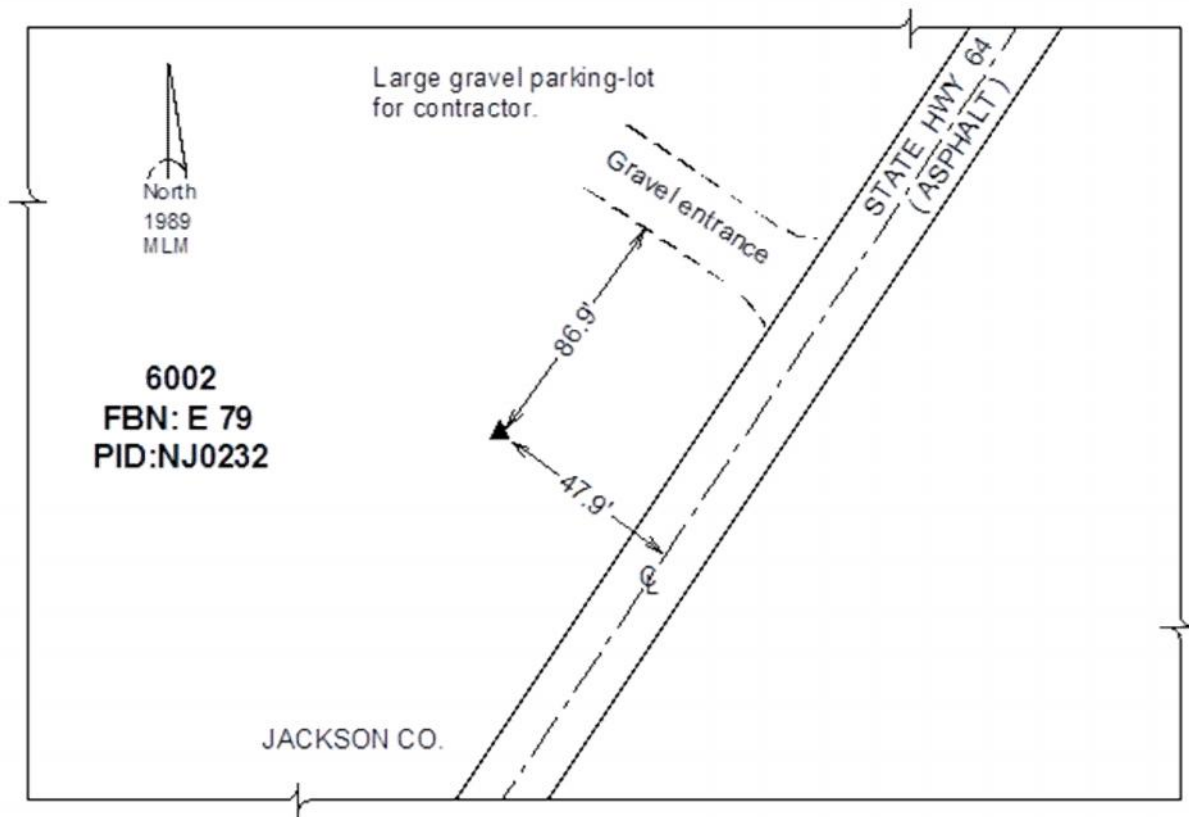
Designation: FBN horizontal control station "E 79" PID: NJ0232

NAD 83(NA2011) Latitude: **N42°03'03.88819"** Longitude: **W90°32'03.50578"**
NAVD 88 Ortho Height: **885.11sft** Ellip. Ht: **777.57sft** **Geoid12A**

Iowa South Zone (1402) Northing: **761048.77sft** Easting: **2445796.00sft**
Mapping Angle: **1°57'13"** Combination Scale Factor: **1.000021434**

IaRCS Zone 10 Northing: **8081377.718sft** Easting: **20807550.617sft**
Mapping Angle: **00° 45' 19"** Combination Scale Factor: **0.999989963**

Monument Type: A standard bench mark disk set in the top of a concrete monument.



This document was prepared by Dan Corbin, Inc. on September 30, 2015 for Cedar County, Iowa.