

Cedar County, Iowa
Iowa South Zone (1402)
Horiz. Datum: NAD83(NSRS2007)
Vert. Datum: NAVD 1988
US Survey Feet
2008

Point Name: **39**

Designation: 2007-039 Cedar Co GPS Control Pt

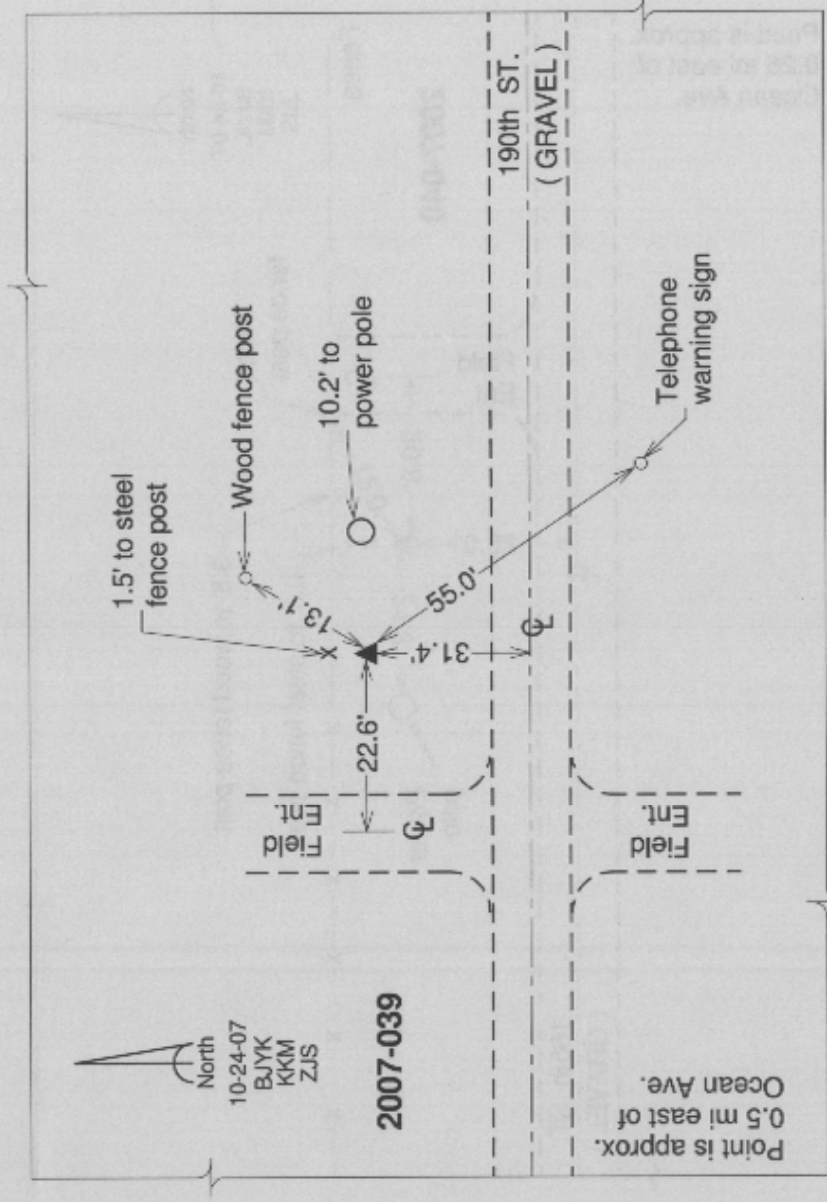
Northing: **670820.22sft** Easting: **2301670.79sft**

Orthometric Height: **827.58sft** Ellipsoid Height: **720.89sft** **Geoid03**

Latitude: **41°48'57.08995"N** Longitude: **91°04'26.34759"W**

Mapping Angle: **1°35'53"** Combination Scale Factor: **0.99997154**

Monument Type: Berntsen 3/4" Top Security Rod Monument with a 2-1/2" dia. domed survey cap and permanent magnet encased in a white PVC pipe with a NGS style alum. access cover.



This document was prepared by DCI and GBC for use by Cedar County, Iowa.