

Cedar County, Iowa
 Iowa South Zone (1402)
 Horiz. Datum: NAD83(NSRS2007)
 Vert. Datum: NAVD 1988
 US Survey Feet
 2008

Point Name: **42**

Designation: 2007-042 Cedar Co GPS Control Pt

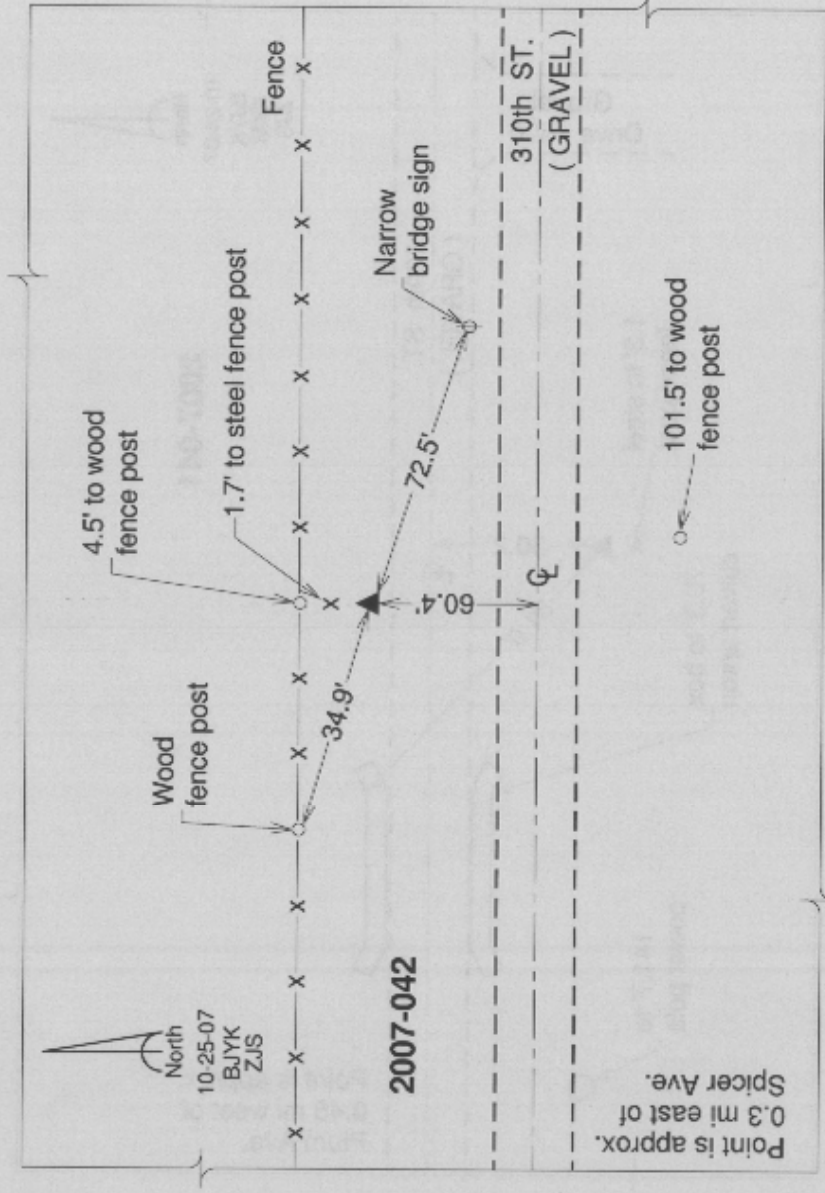
Northing: **607689.07**sft Easting: **2320616.75**sft

Orthometric Height: **731.74**sft Ellipsoid Height: **624.55**sft **Geoid03**

Latitude: **41°38'28.34979"N** Longitude: **91°00'40.10148"W**

Mapping Angle: **1°38'22"** Combination Scale Factor: **0.999994805**

Monument Type: Berntsen 3/4" Top Security Rod Monument with a 2-1/2" dia. domed survey cap and permanent magnet encased in a white PVC pipe with a NGS style alum. access cover.



This document was prepared by DCI and GBC for use by Cedar County, Iowa.