

Cedar County, Iowa
Iowa South Zone (1402)
Horiz. Datum: NAD83(NSRS2007)
Vert. Datum: NAVD 1988
US Survey Feet
2008

Point Name: 5022

Designation: 2000-103 Muscatine Co GPS Control Pt (Set by ASI in 2000)

Northing: 591444.11sft Easting: 2351592.11sft

Orthometric Height: 684.64sft Ellipsoid Height: 577.30sft Geoid03

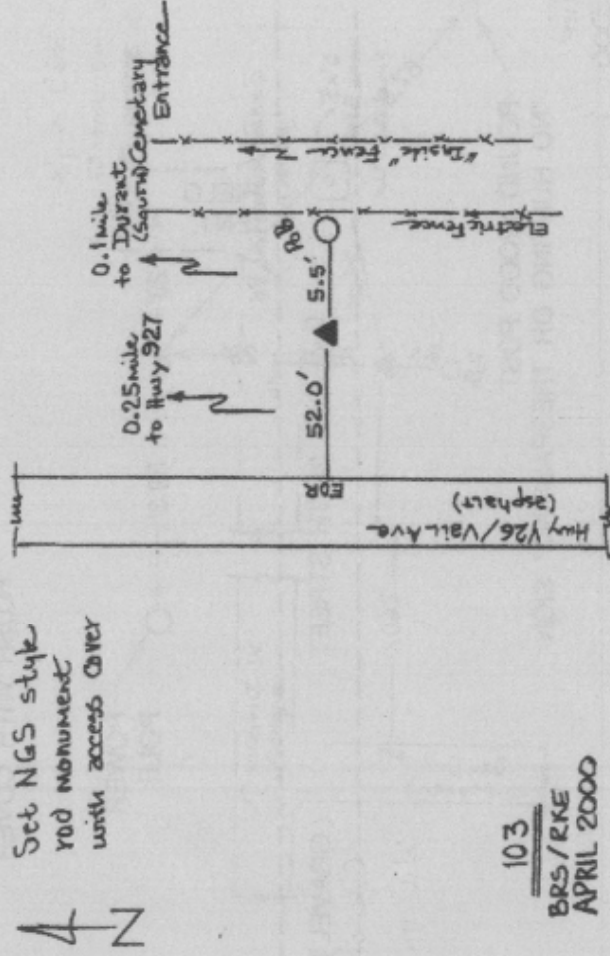
Latitude: 41°35'38.96993"N Longitude: 90°53'58.71336"W

Mapping Angle: 1°42'46" Combination Scale Factor: 0.99994434

Monument Type: 5/8" dia. driven aluminum rod with a 2-1/2" dia. aluminum cap and permanent magnet encased in a 5" dia. PVC pipe with an aluminum access cover.

To Reach: 50ft E of Y26, approx. 0.25 mi S of Hwy 927 near the NW cor Sec 6 T78N R1E.

Date Printed August 9, 2000



Set NGS style
rod monument
with access cover

103
BRS/RKE
APRIL 2000