

**Cedar County, Iowa**  
Iowa South Zone (1402)  
Horiz. Datum: NAD83(NSRS2007)  
Vert. Datum: NAVD 1988  
US Survey Feet  
2008

Point Name: 56

**Designation:** 2007-056 Cedar Co GPS Control Pt

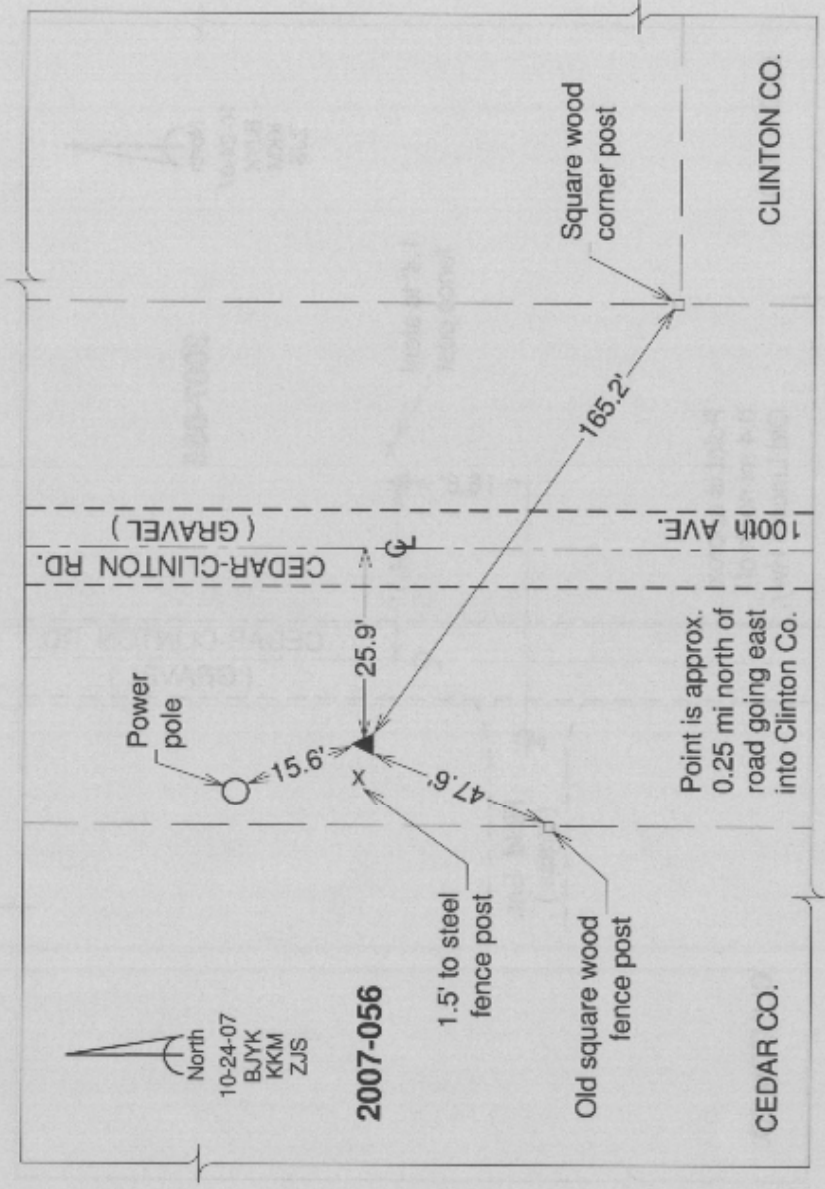
**Northing:** 702598.86sft    **Easting:** 2348569.83sft

**Orthometric Height:** 713.69sft    **Ellipsoid Height:** 606.95sft    **Geoid03**

**Latitude:** 41°53'57.51289"N    **Longitude:** 90°53'54.72602"W

**Mapping Angle:** 1°42'49"    **Combination Scale Factor:** 0.999999369

**Monument Type:** Bernisen 3/4" Top Security Rod Monument with a 2-1/2" dia. domed survey cap and permanent magnet encased in a white PVC pipe with a NGS style alum. access cover.



*This document was prepared by DCI and GBC for use by Cedar County, Iowa.*