

Cedar County, Iowa
Horizontal Datum: **NAD 83(2011)** - Vertical Datum: **NAVD 1988**
Iowa State Plane South Zone (1402)
Iowa Regional Coordinate System, Zone 10. Cedar Rapids (LCC)
US Survey Feet
2015

Point Name: **MG0566**

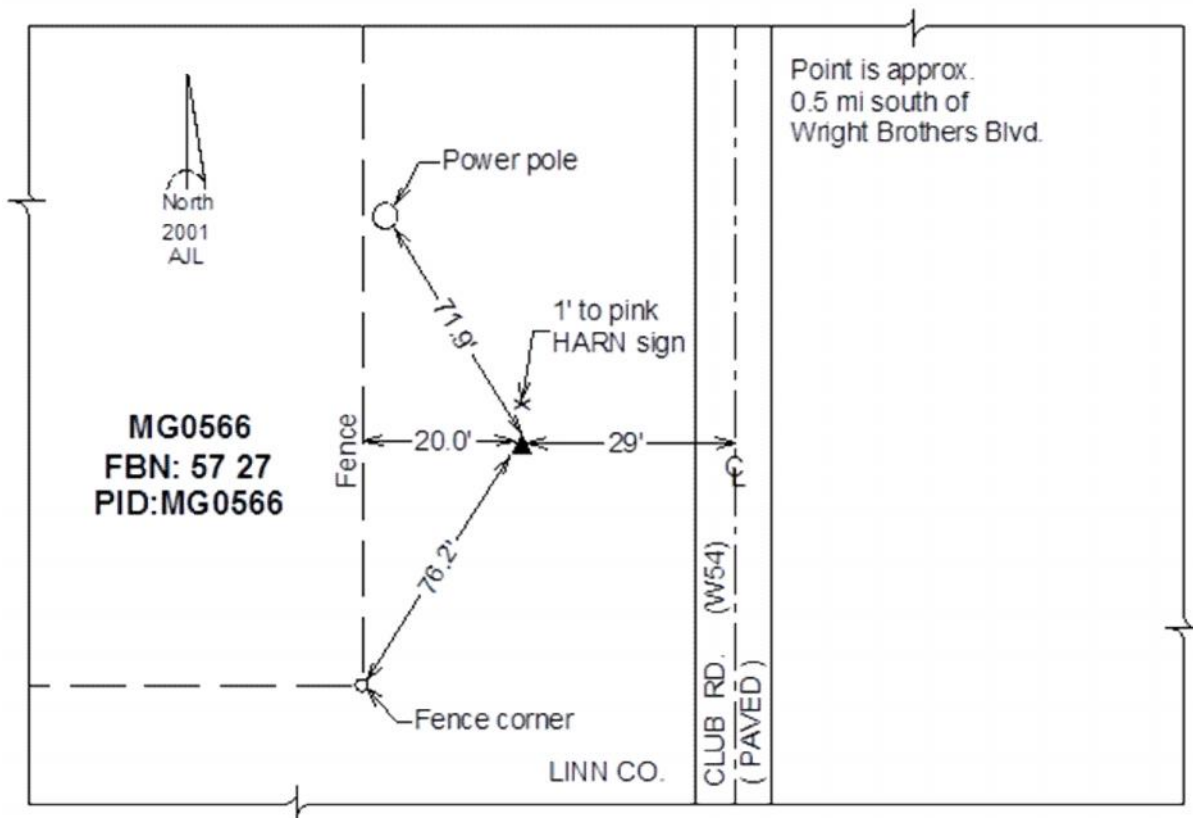
Designation: FBN horizontal control station "57 27" PID: MG0566

NAD 83(NA2011) Latitude: **N41°52'59.87116"** Longitude: **W91°38'48.29225"**
NAVD 88 Ortho Height: **810.72sft** Ellip. Ht: **704.43sft** **Geoid12A**

Iowa South Zone (1402) Northing: **691549.72sft** Easting: **2145057.76sft**
Mapping Angle: **1°13'15"** Combination Scale Factor: **0.999985669**

IaRCS Zone 10 Northing: **8018208.149sft** Easting: **20505424.316sft**
Mapping Angle: **00° 00' 48"** Combination Scale Factor: **0.999986641**

Monument Type: A standard survey disk stamped "57 27" and set in the top of a concrete monument.



This document was prepared by Dan Corbin, Inc. on September 30, 2015 for Cedar County, Iowa.