

Cerro Gordo County, Iowa
Iowa North Zone (1401)
Horiz. Datum: **NAD83(NA2011)**
Vert. Datum: NAVD 1988
US Survey Feet
2013

Point Name: **22**

Designation: G22 (97-022 Hancock Co GPS Control Pt. Set by ASI in 1997)

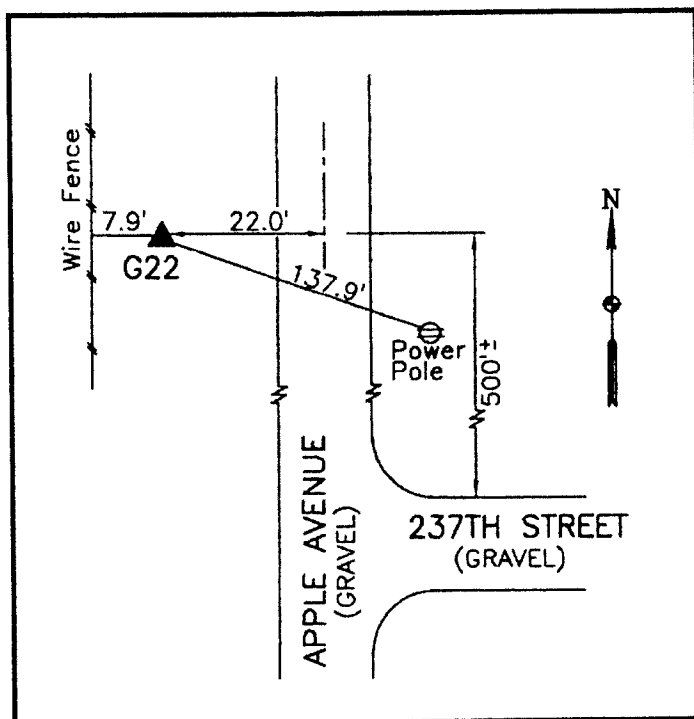
Northing: **3867447.38sft** Easting: **4921838.63sft**

Orthometric Height: **1240.90sft** Ellipsoid Height: **1146.44sft** **Geoid12A**

Latitude: **N43°06'34.80612"** Longitude: **W93°29'52.06455"**

Mapping Angle: **0°00'05"** Combination Scale Factor: **0.999920393**

Monument Type: 5/8" dia driven aluminum rod with a 2-1/2" dia aluminum cap and permanent magnet encased in a 5" dia PVC pipe with an aluminum access cover.



25' West of Apple Avenue-500'
North of 237th Street-near the
NE Corner of Section 25-T96N-
R23W

WHKS & CO.

This document was prepared by DCI on 09-30-2013 for use by Cerro Gordo County, Iowa.