

Cerro Gordo County, Iowa
Iowa North Zone (1401)
Horiz. Datum: **NAD83(NA2011)**
Vert. Datum: NAVD 1988
US Survey Feet
2013

Point Name: **27 (Replaced by 166)**

Designation: G27 (97-027 Hancock Co GPS Control Pt. Set by ASI in 1997)

Northing: **3857771.16**sft Easting: **4921822.33**sft

Orthometric Height: **1256.06**sft Ellipsoid Height: **1162.16**sft **Geoid99**

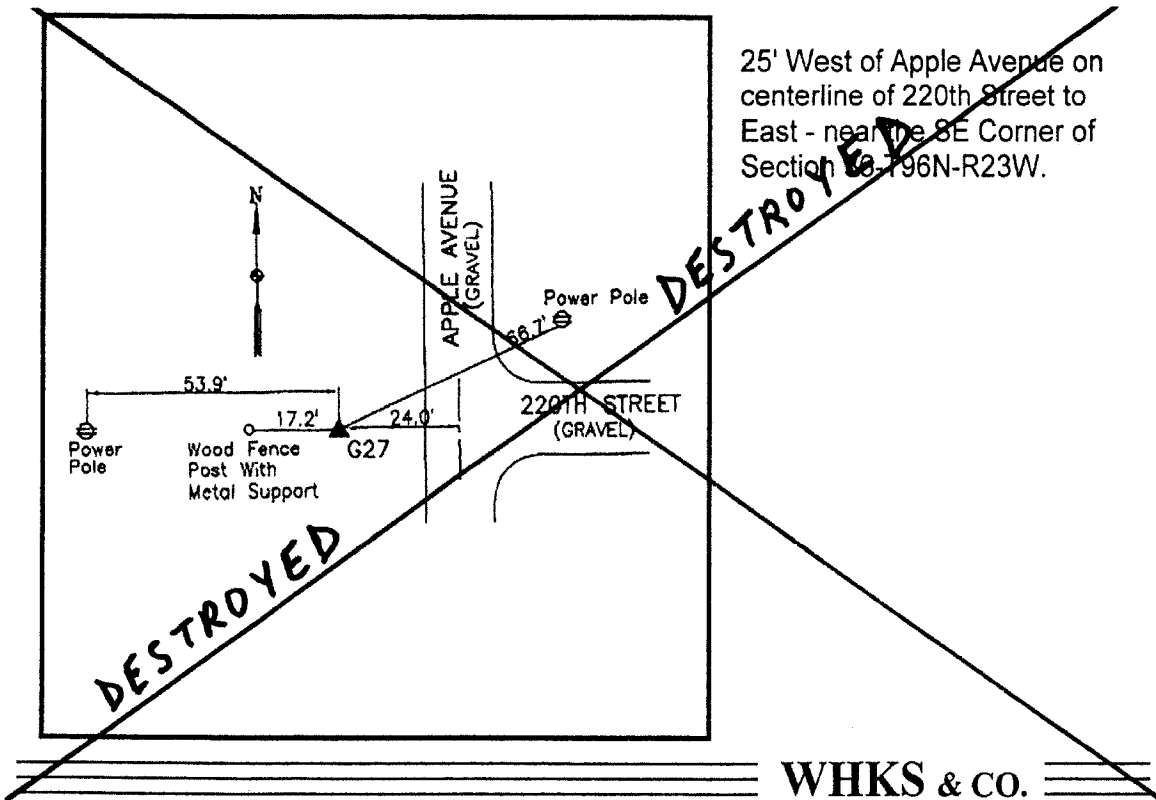
Latitude: **N43°04'59.23149"**

Longitude: **W93°29'52.28770"**

Mapping Angle: **0°00'05"**

Combination Scale Factor: **0.999916180**

Monument Type: 5/8" dia driven aluminum rod with a 2-1/2" dia aluminum cap and permanent magnet encased in a 5" dia PVC pipe with an aluminum access cover.



This document was prepared by DCI on 09-30-2013 for use by Cerro Gordo County, Iowa.