

Cerro Gordo County, Iowa  
Iowa North Zone (1401)  
Horiz. Datum: NAD83(NA2011)  
Vert. Datum: NAVD 1988  
US Survey Feet  
2013

Point Name: 30

**Designation:** G30 (97-030 Hancock Co GPS Control Pt. Set by ASI in 1997)

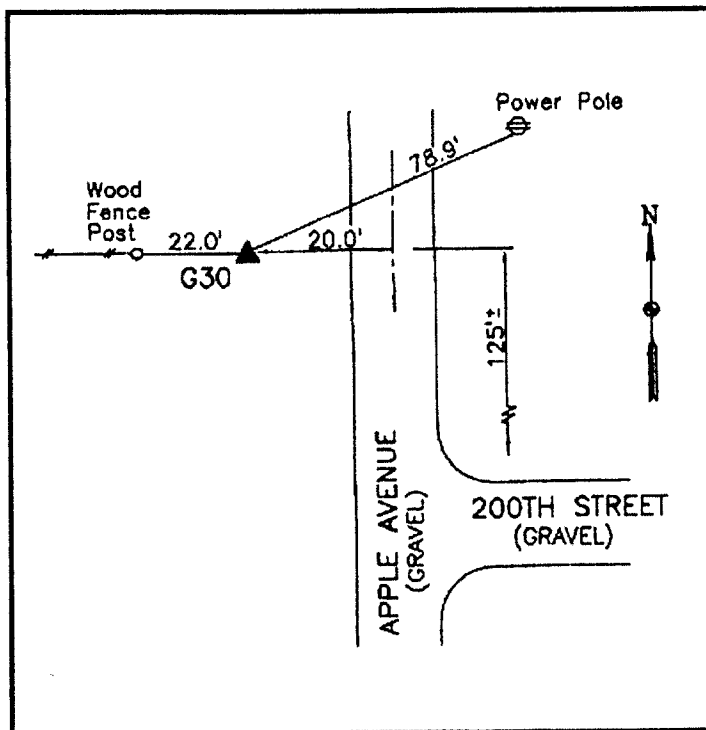
Northing: 3847016.80sft Easting: 4921830.16sft

Orthometric Height: 1246.96sft Ellipsoid Height: 1153.33sft **Geoid12A**

Latitude: N43°03'13.00681" Longitude: W93°29'52.18584"

Mapping Angle: 0°00'05" Combination Scale Factor: 0.999912997

**Monument Type:** 5/8" dia driven aluminum rod with a 2-1/2" dia aluminum cap and permanent magnet encased in a 5" dia PVC pipe with an aluminum access cover.



25' West of Apple Avenue -  
125' North of 200th Street to  
East - near the SE Corner of  
Section 12-T95N-R23W.

WHKS & CO.

*This document was prepared by DCI on 09-30-2013 for use by Cerro Gordo County, Iowa.*