

Cerro Gordo County, Iowa
Iowa North Zone (1401)
Horiz. Datum: **NAD83(NA2011)**
Vert. Datum: NAVD 1988
US Survey Feet
2013

Point Name: **102**

Designation: G102 (Set by WHKS & Co. in 2002)

Northing: **3794067.32sft** Easting: **5032586.29sft**

Orthometric Height: **1091.75sft** Ellipsoid Height: **993.78sft** **Geoid12A**

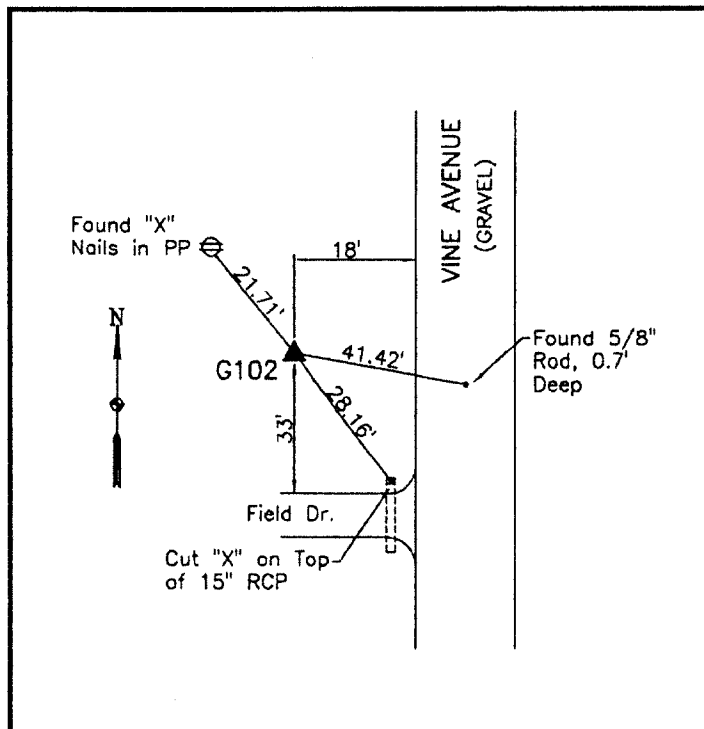
Latitude: **N42°54'27.29026"**

Longitude: **W93°05'03.93300"**

Mapping Angle: **0°16'54"**

Combination Scale Factor: **0.999906702**

Monument Type: 5/8" x 6'-0" long aluminum rod with cap stamped G102 and NGS style access cover 2" deep.



West side Vine Avenue - 30'±
north of field entrance - 25'±
south of a power pole - 25'±
north of SW Corner 34-T94N-
R19W.

WHKS & CO.

This document was prepared by DCI on 09-30-2013 for use by Cerro Gordo County, Iowa.