

Cerro Gordo County, Iowa
Iowa North Zone (1401)
Horiz. Datum: NAD83(NA2011)
Vert. Datum: NAVD 1988
US Survey Feet
2013

Point Name: 103

Designation: G103 (Set by WHKS & Co. in 2002)

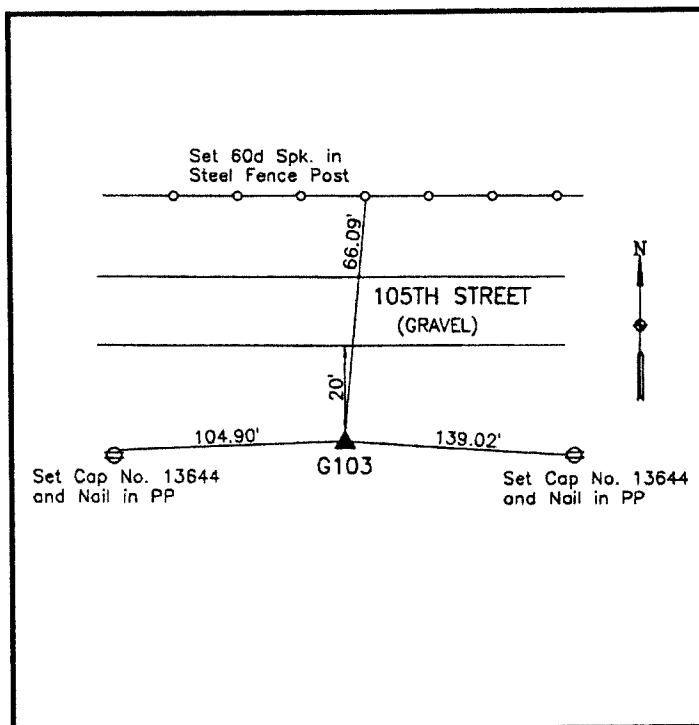
Northing: 3796452.71sft Easting: 5017859.92sft

Orthometric Height: 1105.61sft Ellipsoid Height: 1009.47sft **Geoid12A**

Latitude: N42°54'51.52022" Longitude: W93°08'21.67739"

Mapping Angle: 0°14'40" Combination Scale Factor: 0.999906452

Monument Type: 5/8" x 6'-0" long aluminum rod with cap stamped G103 and NGS style access cover 3" deep.



On south side 105th Street -
0.2± mile east of Spruce
Avenue - near West 1/4 Corner
Section 31-T94N-R20W.

WHKS & CO.

This document was prepared by DCI on 09-30-2013 for use by Cerro Gordo County, Iowa.