

**Cerro Gordo County, Iowa**  
 Iowa North Zone (1401)  
 Horiz. Datum: **NAD83(NA2011)**  
 Vert. Datum: NAVD 1988  
 US Survey Feet  
**2013**

Point Name: **106**

**Designation:** G106 (Set by WHKS & Co. in 2002)

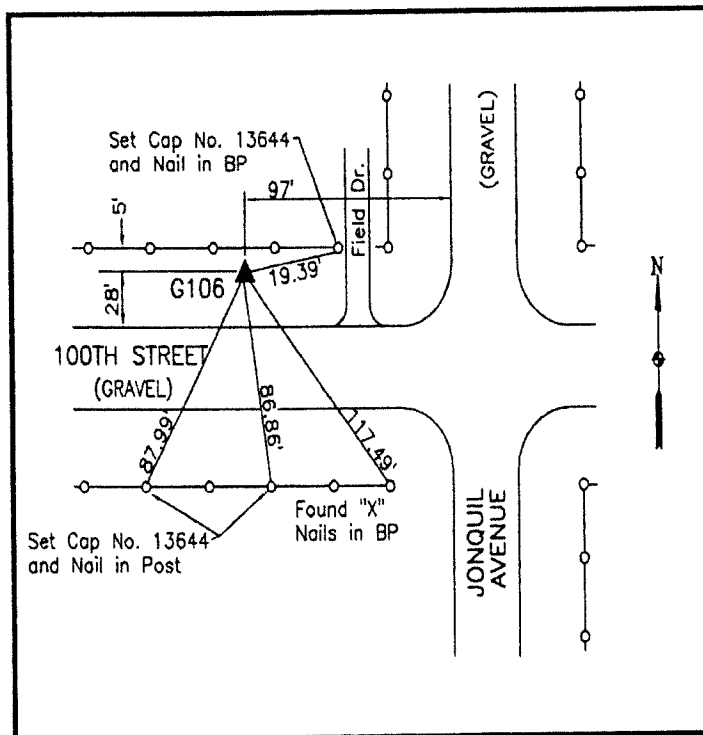
Northing: **3793959.41sft** Easting: **4969099.69sft**

Orthometric Height: **1162.18sft** Ellipsoid Height: **1070.30sft** **Geoid12A**

Latitude: **N42°54'28.42814"** Longitude: **W93°19'17.02480"**

Mapping Angle: **0°07'16"** Combination Scale Factor: **0.999903075**

**Monument Type:** 5/8" x 6'-0" long aluminum rod with cap stamped G106 and NGS style access cover 1" deep.



North side 100th Street and 110'± west of Jonquil Avenue - 20'± west of gate post - near SW Corner Section 34-T94N-R21W.

**WHKS & CO.**

*This document was prepared by DCI on 09-30-2013 for use by Cerro Gordo County, Iowa.*