

**Cerro Gordo County, Iowa**  
Iowa North Zone (1401)  
Horiz. Datum: **NAD83(NA2011)**  
Vert. Datum: NAVD 1988  
US Survey Feet  
**2013**

Point Name: **107**

**Designation:** G107 (Set by WHKS & Co. in 2002)

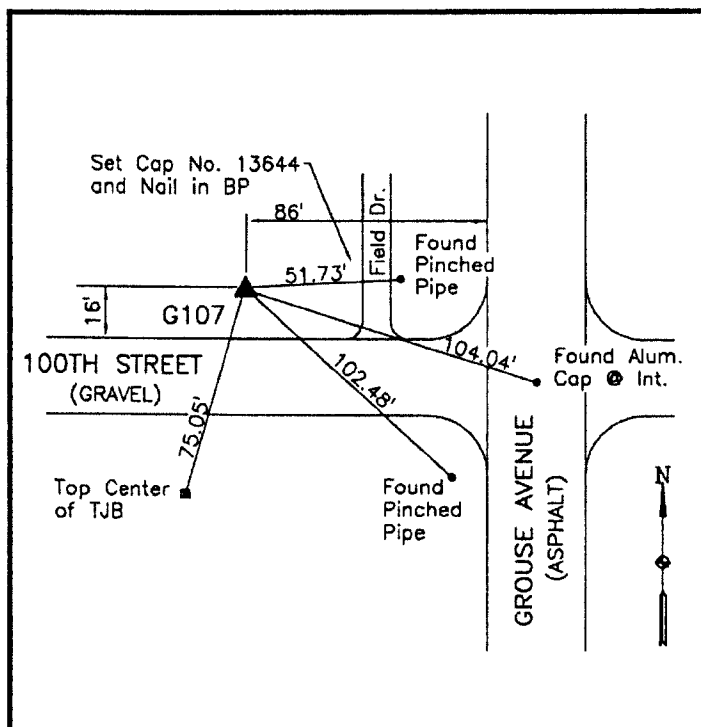
Northing: **3793997.43sft** Easting: **4953381.21sft**

Orthometric Height: **1224.29sft** Ellipsoid Height: **1132.88sft** **Geoid12A**

Latitude: **N42°54'29.07788"** Longitude: **W93°22'48.23923"**

Mapping Angle: **0°04'53"** Combination Scale Factor: **0.999900102**

**Monument Type:** 5/8" x 6'-0" long aluminum rod with cap stamped G107 and NGS style access cover 1" deep.



NW Corner Grouse Avenue  
and 100th Street - 30± west of  
field entrance - near SW  
Corner Section 31-T94N-  
R21W.

**WHKS & CO.**

*This document was prepared by DCI on 09-30-2013 for use by Cerro Gordo County, Iowa.*