

Cerro Gordo County, Iowa
Iowa North Zone (1401)
Horiz. Datum: **NAD83(NA2011)**
Vert. Datum: NAVD 1988
US Survey Feet
2013

Point Name: **108**

Designation: G108 (Set by WHKS & Co. in 2002)

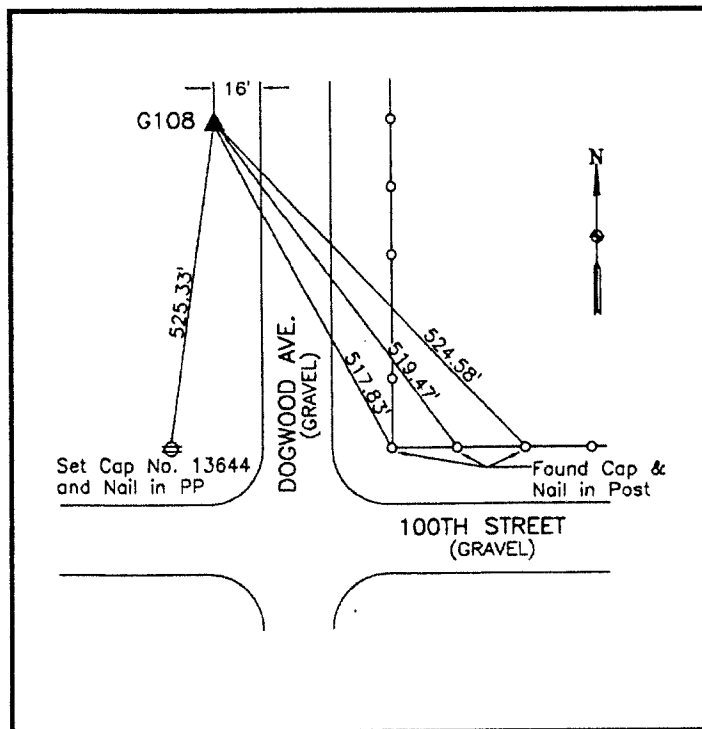
Northing: **3794604.96sft** Easting: **4937583.26sft**

Orthometric Height: **1258.87sft** Ellipsoid Height: **1167.55sft** **Geoid12A**

Latitude: **N42°54'35.24586"** Longitude: **W93°26'20.51699"**

Mapping Angle: **0°02'29"** Combination Scale Factor: **0.999898574**

Monument Type: 5/8" x 6'-0" long aluminum rod with cap stamped G108 and NGS style access cover 2" deep.



West side Dogwood Avenue -
450'± north of 100th Street -
20'± south of field entrance -
near SW Corner Section 34-
T94N-R22W.

WHKS & CO.

This document was prepared by DCI on 09-30-2013 for use by Cerro Gordo County, Iowa.