

Cerro Gordo County, Iowa
Iowa North Zone (1401)
Horiz. Datum: NAD83(NA2011)
Vert. Datum: NAVD 1988
US Survey Feet
2013

Point Name: 109

Designation: G109 (Set by WHKS & Co. in 2002)

Northing: 3809935.30sft Easting: 4937400.70sft

Orthometric Height: 1254.00sft Ellipsoid Height: 1162.34sft **Geoid12A**

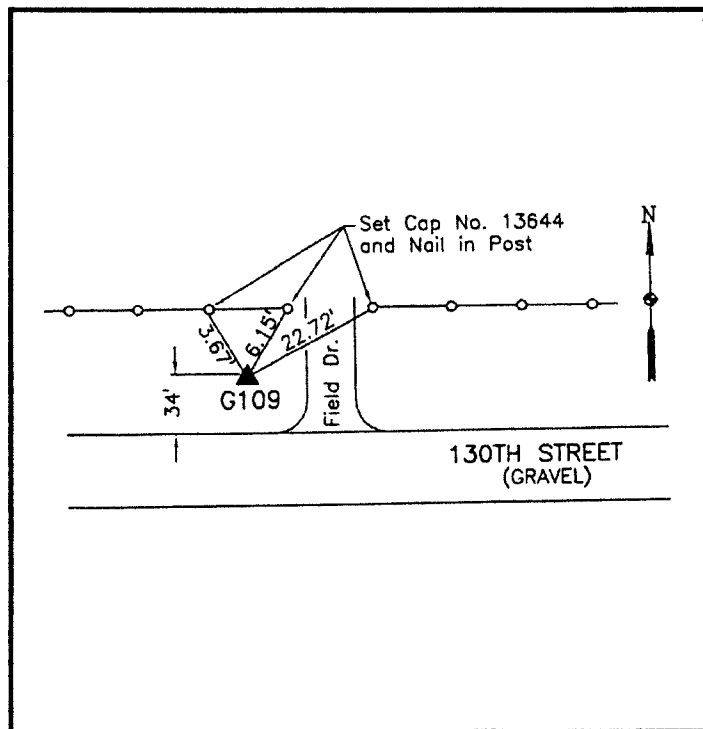
Latitude: N42°57'06.67603"

Longitude: W93°26'22.82319"

Mapping Angle: 0°02'27"

Combination Scale Factor: 0.999902190

Monument Type: 5/8" x 6'-0" long aluminum rod with cap stamped G109 and NGS style access cover 1" deep.



On north side 130th Street -
250'± west of section line
fence - 20'± west of field
entrance - 0.3± mile west of
Farm 4 258 on 130th Street -
near NW Corner Section 22-
T94N-R22W -.

WHKS & CO.

This document was prepared by DCI on 09-30-2013 for use by Cerro Gordo County, Iowa.