

Cerro Gordo County, Iowa
Iowa North Zone (1401)
Horiz. Datum: **NAD83(NA2011)**
Vert. Datum: NAVD 1988
US Survey Feet
2013

Point Name: **110**

Designation: G110 (Set by WHKS & Co. in 2002)

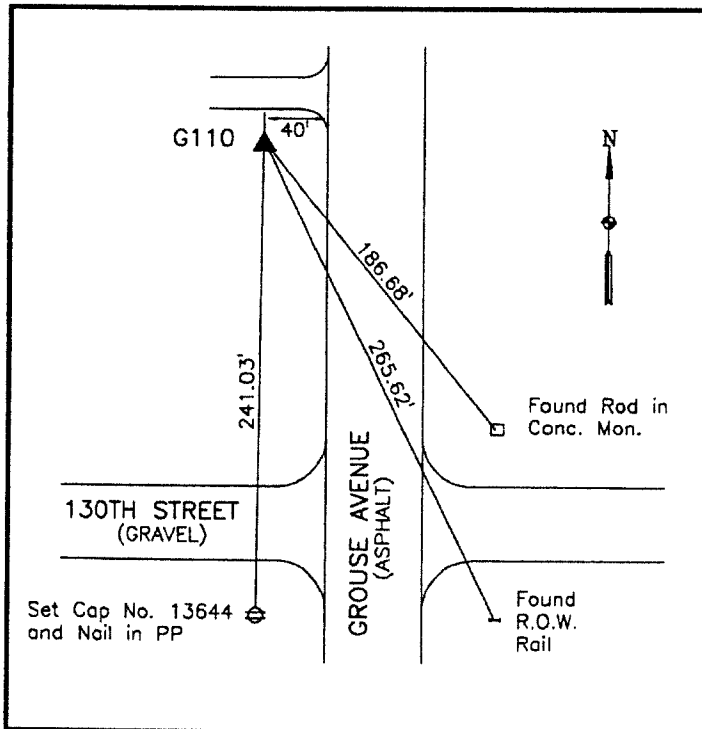
Northing: **3809971.03sft** Easting: **4953443.56sft**

Orthometric Height: **1195.73sft** Ellipsoid Height: **1104.19sft** **Geoid12A**

Latitude: **N42°57'06.85975"** Longitude: **W93°22'47.09610"**

Mapping Angle: **0°04'53"** Combination Scale Factor: **0.999904969**

Monument Type: 5/8" x 6'-0" long aluminum rod with cap stamped G110 and NGS style access cover 2" deep.



WHKS & CO.

This document was prepared by DCI on 09-30-2013 for use by Cerro Gordo County, Iowa.