

Cerro Gordo County, Iowa
Iowa North Zone (1401)
Horiz. Datum: **NAD83(NA2011)**
Vert. Datum: NAVD 1988
US Survey Feet
2013

Point Name: **111**

Designation: G111 (Set by WHKS & Co. in 2002)

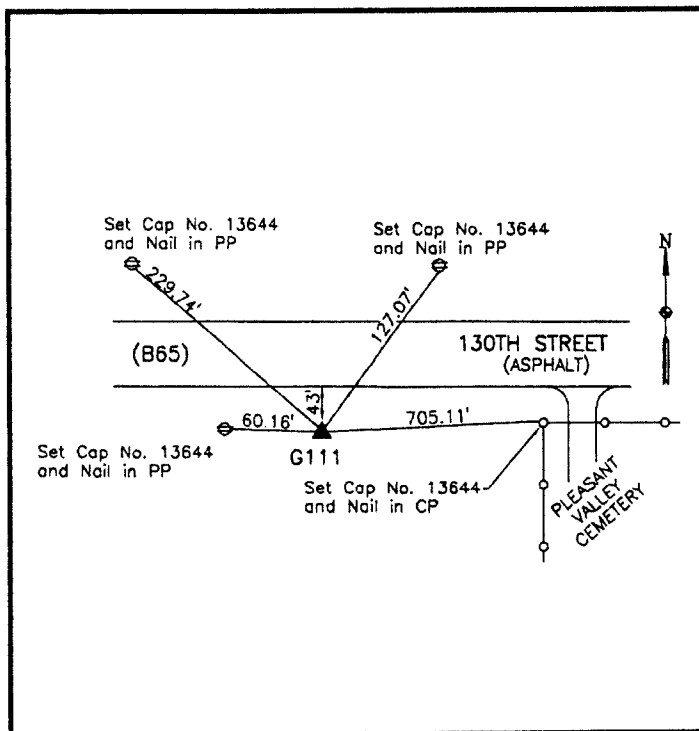
Northing: **3809654.71sft** Easting: **4967921.01sft**

Orthometric Height: **1183.86sft** Ellipsoid Height: **1092.06sft** **Geoid12A**

Latitude: **N42°57'03.48610"** Longitude: **W93°19'32.42822"**

Mapping Angle: **0°07'05"** Combination Scale Factor: **0.999905466**

Monument Type: 5/8" x 6'-0" long aluminum rod with cap stamped G111 and NGS style access cover 1" deep.



On south side 130th Street -
0.25± mile west of Jonquil
Avenue - 30'± west of west
side culvert to field entrance -
near NW Corner Section 22-
T94N-R21W.

WHKS & CO.

This document was prepared by DCI on 09-30-2013 for use by Cerro Gordo County, Iowa.