

Cerro Gordo County, Iowa
 Iowa North Zone (1401)
 Horiz. Datum: **NAD83(NA2011)**
 Vert. Datum: NAVD 1988
 US Survey Feet
2013

Point Name: **112**

Designation: G112 (Set by WHKS & Co. in 2002)

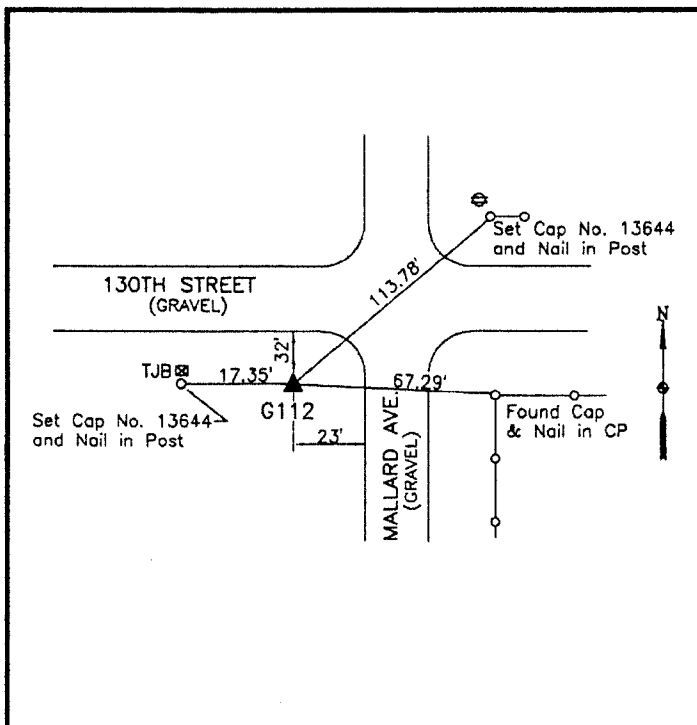
Northing: **3809749.57sft** Easting: **4985055.04sft**

Orthometric Height: **1109.89sft** Ellipsoid Height: **1017.27sft** **Geoid12A**

Latitude: **N42°57'04.01005"** Longitude: **W93°15'42.02937"**

Mapping Angle: **0°09'41"** Combination Scale Factor: **0.999909047**

Monument Type: 5/8" x 6'-0" long aluminum rod with cap stamped G112 and NGS style access cover 2" deep.



SW Corner Mallard Avenue
and 130th Street - near NW
Corner Section 19-T94N-
R20W.

WHKS & CO.

This document was prepared by DCI on 09-30-2013 for use by Cerro Gordo County, Iowa.