

Cerro Gordo County, Iowa
Iowa North Zone (1401)
Horiz. Datum: **NAD83(NA2011)**
Vert. Datum: NAVD 1988
US Survey Feet
2013

Point Name: **113**

Designation: G113 (Set by WHKS & Co. in 2002)

Northing: **3809838.47**sft Easting: **5000611.76**sft

Orthometric Height: **1075.39**sft Ellipsoid Height: **981.52**sft **Geoid12A**

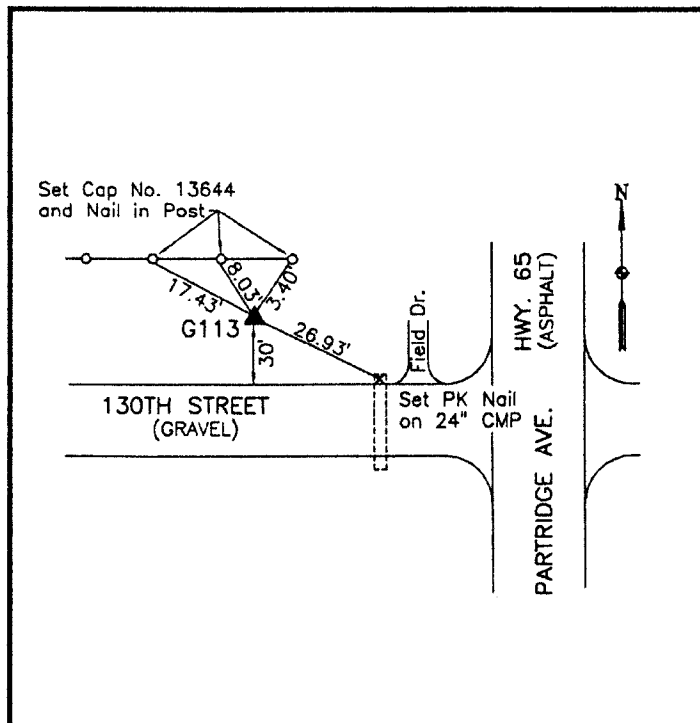
Latitude: **N42°57'04.40218"**

Longitude: **W93°12'12.83934"**

Mapping Angle: **0°12'03"**

Combination Scale Factor: **0.999910762**

Monument Type: 5/8" x 6'-0" long aluminum rod with cap stamped G113 and NGS style access cover 1" deep.



NW Corner Hwy 65 (Partridge Avenue) and 130th Street - west of old RR Bed - 3'± west of end wood post - near NW Corner Section 22-T94N-R20W.

WHKS & CO.