

Cerro Gordo County, Iowa
Iowa North Zone (1401)
Horiz. Datum: **NAD83(NA2011)**
Vert. Datum: NAVD 1988
US Survey Feet
2013

Point Name: **114**

Designation: G114 (Set by WHKS & Co. in 2002)

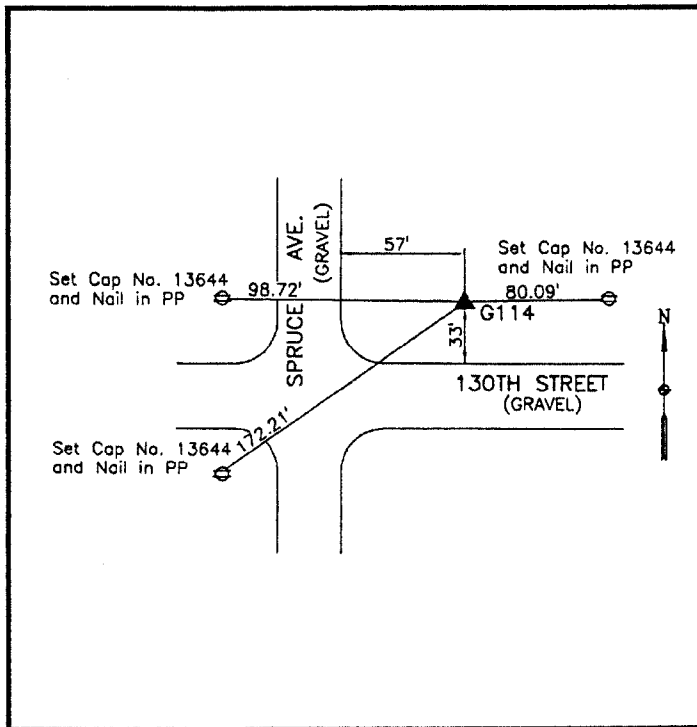
Northing: **3809725.33sft** Easting: **5016888.55sft**

Orthometric Height: **1130.40sft** Ellipsoid Height: **1034.78sft** **Geoid12A**

Latitude: **N42°57'02.66306"** Longitude: **W93°08'33.97753"**

Mapping Angle: **0°14'32"** Combination Scale Factor: **0.999908179**

Monument Type: 5/8" x 6'-0" long aluminum rod with cap stamped G114 and NGS style access cover 2" deep.



NE Corner Spruce Avenue and
130th Street - near NW Corner
Section 19-T94N-R19W.

WHKS & CO.

This document was prepared by DCI on 09-30-2013 for use by Cerro Gordo County, Iowa.