

Cerro Gordo County, Iowa
 Iowa North Zone (1401)
 Horiz. Datum: **NAD83(NA2011)**
 Vert. Datum: NAVD 1988
 US Survey Feet
2013

Point Name: **115**

Designation: G115 (Set by WHKS & Co. in 2002)

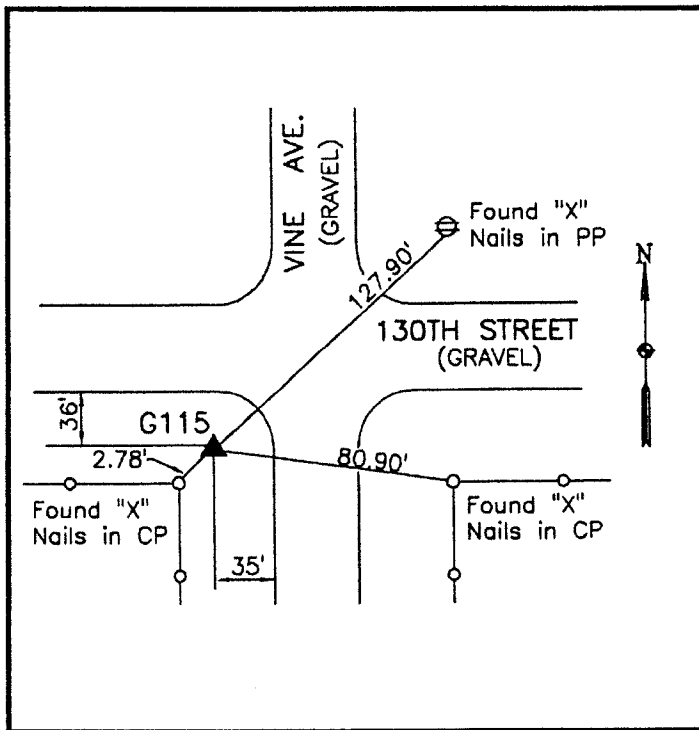
Northing: **3809796.54sft** Easting: **5032582.48sft**

Orthometric Height: **1117.41sft** Ellipsoid Height: **1019.95sft** **Geoid12A**

Latitude: **N42°57'02.65766"** Longitude: **W93°05'02.94447"**

Mapping Angle: **0°16'55"** Combination Scale Factor: **0.999908887**

Monument Type: 5/8" x 6'-0" long aluminum rod with cap stamped G115 and NGS style access cover 1" deep.



SW Corner Vine Avenue and
 130th Street - 2± N and 2±
 East of corner post - near NW
 Corner Section 22-T94N-
 R19W.

WHKS & CO.

This document was prepared by DCI on 09-30-2013 for use by Cerro Gordo County, Iowa.