

Cerro Gordo County, Iowa
Iowa North Zone (1401)
Horiz. Datum: **NAD83(NA2011)**
Vert. Datum: NAVD 1988
US Survey Feet
2013

Point Name: **116**

Designation: G116 (Set by WHKS & Co. in 2002)

Northing: **3824696.85sft** Easting: **5032846.18sft**

Orthometric Height: **1183.79sft** Ellipsoid Height: **1086.72sft** **Geoid12A**

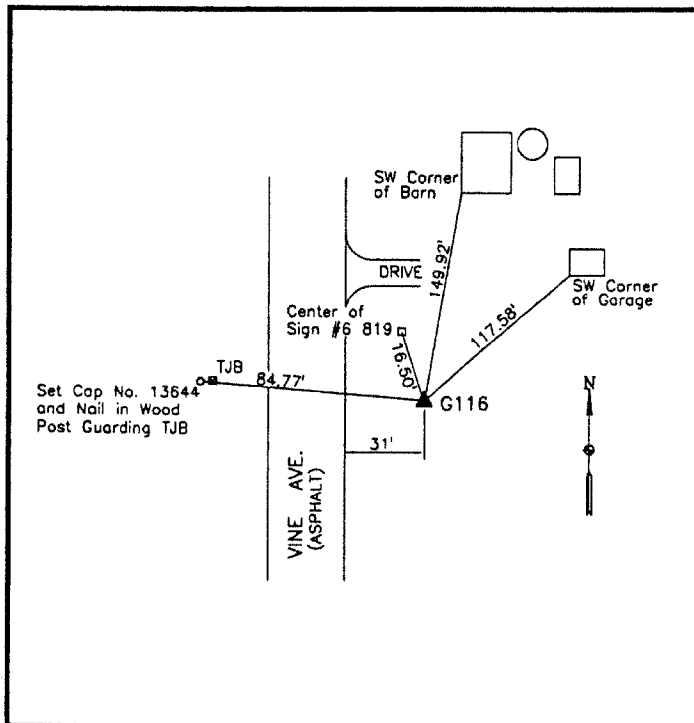
Latitude: **N42°59'29.82267"**

Longitude: **W93°04'58.41020"**

Mapping Angle: **0°16'58"**

Combination Scale Factor: **0.999909476**

Monument Type: 5/8" x 6'-0" long aluminum rod with cap stamped G116 and NGS style access cover 1" deep.



On east side Vine Avenue -
800'± south of 160th Street -
30'± south of field entrance -
near NW Corner Section 3-
T94N-R19W.

WHKS & CO.

This document was prepared by DCI on 09-30-2013 for use by Cerro Gordo County, Iowa.