

Cerro Gordo County, Iowa
Iowa North Zone (1401)
Horiz. Datum: **NAD83(NA2011)**
Vert. Datum: NAVD 1988
US Survey Feet
2013

Point Name: **118**

Designation: G118 (Set by WHKS & Co. in 2002)

Northing: **3827697.72sft** Easting: **5001108.63sft**

Orthometric Height: **1129.73sft** Ellipsoid Height: **1036.14sft** **Geoid12A**

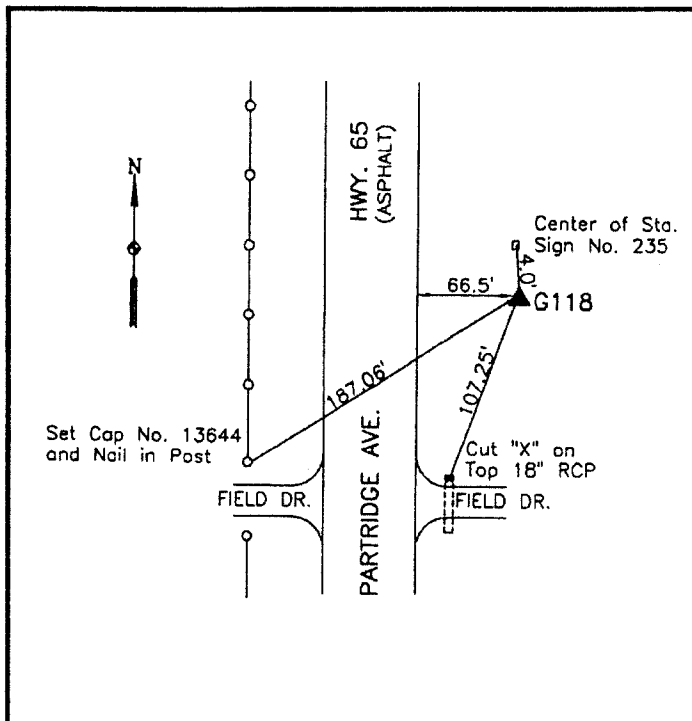
Latitude: **N43°00'00.79053"**

Longitude: **W93°12'05.31009"**

Mapping Angle: **0°12'08"**

Combination Scale Factor: **0.999912749**

Monument Type: 5/8" x 6'-0" long aluminum rod with cap stamped G118 and NGS style access cover 0" deep.



On east side Hwy 65 (Partridge Avenue) - 100'± north of field entrance - 5'± south of right of way marker 235 - 0.3± mile north of NW Corner Section 3-T94N-R20W.

WHKS & CO.

This document was prepared by DCI on 09-30-2013 for use by Cerro Gordo County, Iowa.