

Cerro Gordo County, Iowa
 Iowa North Zone (1401)
 Horiz. Datum: **NAD83(NA2011)**
 Vert. Datum: NAVD 1988
 US Survey Feet
2013

Point Name: **119**

Designation: G119 (Set by WHKS & Co. in 2002)

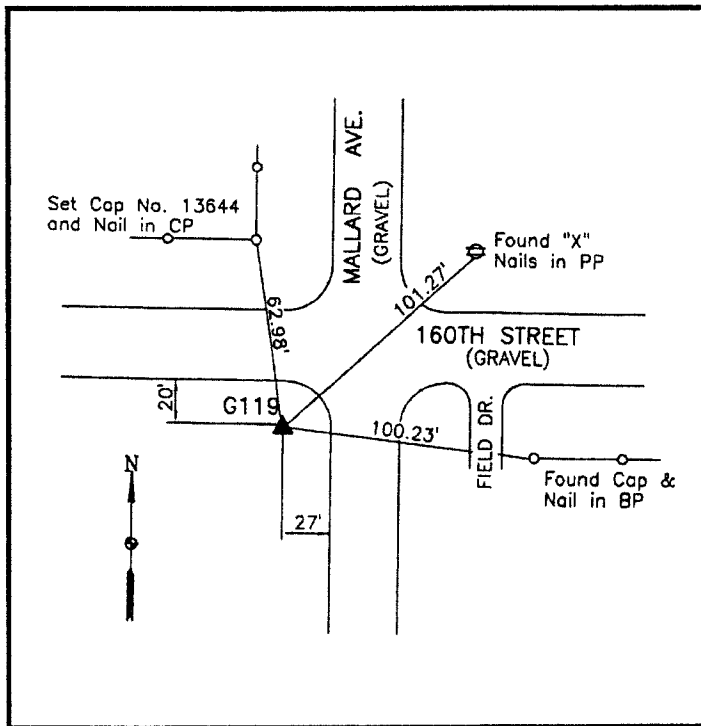
Northing: **3825530.38sft** Easting: **4985119.23sft**

Orthometric Height: **1120.98sft** Ellipsoid Height: **1028.49sft** **Geoid12A**

Latitude: **N42°59'39.88449"** Longitude: **W93°15'40.56692"**

Mapping Angle: **0°09'42"** Combination Scale Factor: **0.999912531**

Monument Type: 5/8" x 6'-0" long aluminum rod with cap stamped G119 and NGS style access cover 1" deep.



SW Corner Mallard Avenue
 and 160th Street - near NW
 Corner Section 6-T94N-R20W.

WHKS & CO.

This document was prepared by DCI on 09-30-2013 for use by Cerro Gordo County, Iowa.