

Cerro Gordo County, Iowa  
Iowa North Zone (1401)  
Horiz. Datum: **NAD83(NA2011)**  
Vert. Datum: NAVD 1988  
US Survey Feet  
**2013**

Point Name: **120 (Replaced by 167)**

**Designation:** G120 (Set by WHKS & Co. in 2002)

Northing: **3825640.60**sft Easting: **4968635.63**sft

Orthometric Height: **1171.59**sft Ellipsoid Height: **1079.55**sft **Geoid99**

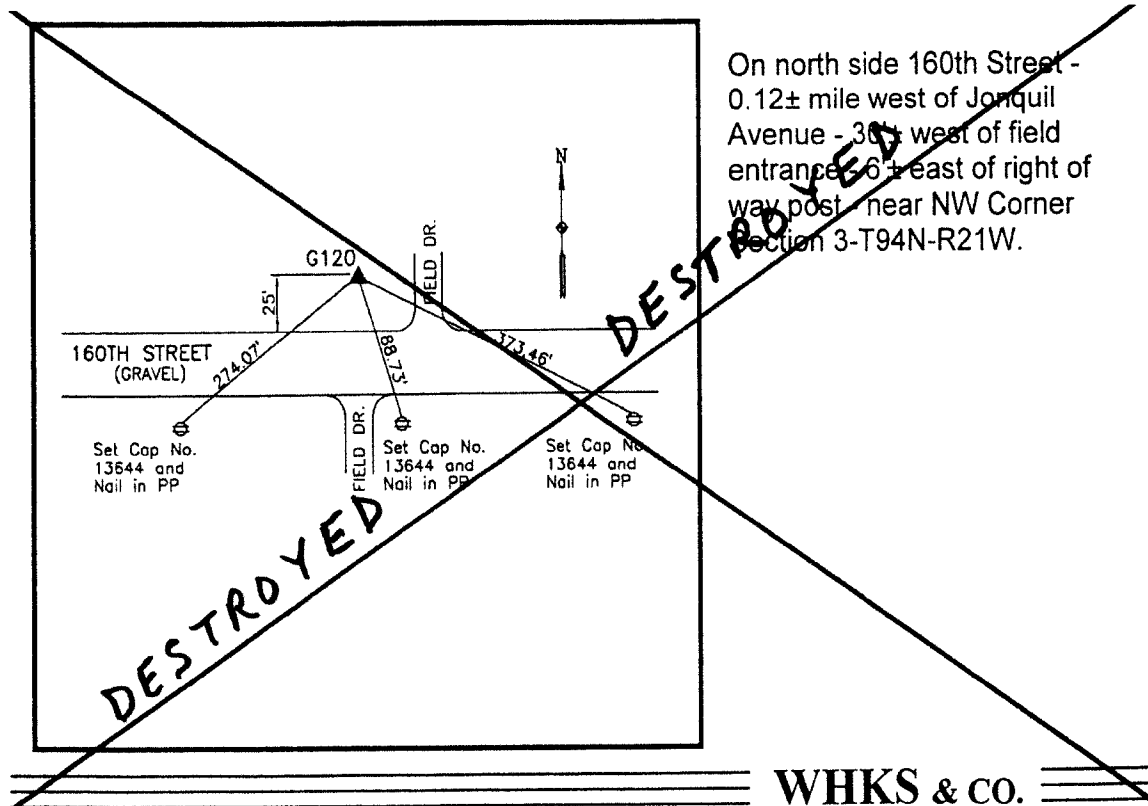
Latitude: **N42°59'41.37364"**

Longitude: **W93°19'22.36860"**

Mapping Angle: **0°07'12"**

Combination Scale Factor: **0.999910140**

**Monument Type:** 5/8" x 6' 0" long aluminum rod with cap stamped G120 and NGS style access cover 4" deep.



*This document was prepared by DCI on 09-30-2013 for use by Cerro Gordo County, Iowa.*