

Cerro Gordo County, Iowa
Iowa North Zone (1401)
Horiz. Datum: **NAD83(NA2011)**
Vert. Datum: NAVD 1988
US Survey Feet
2013

Point Name: **121 (Replaced by 168)**

Designation: G121 (Set by WHKS & Co. in 2002)

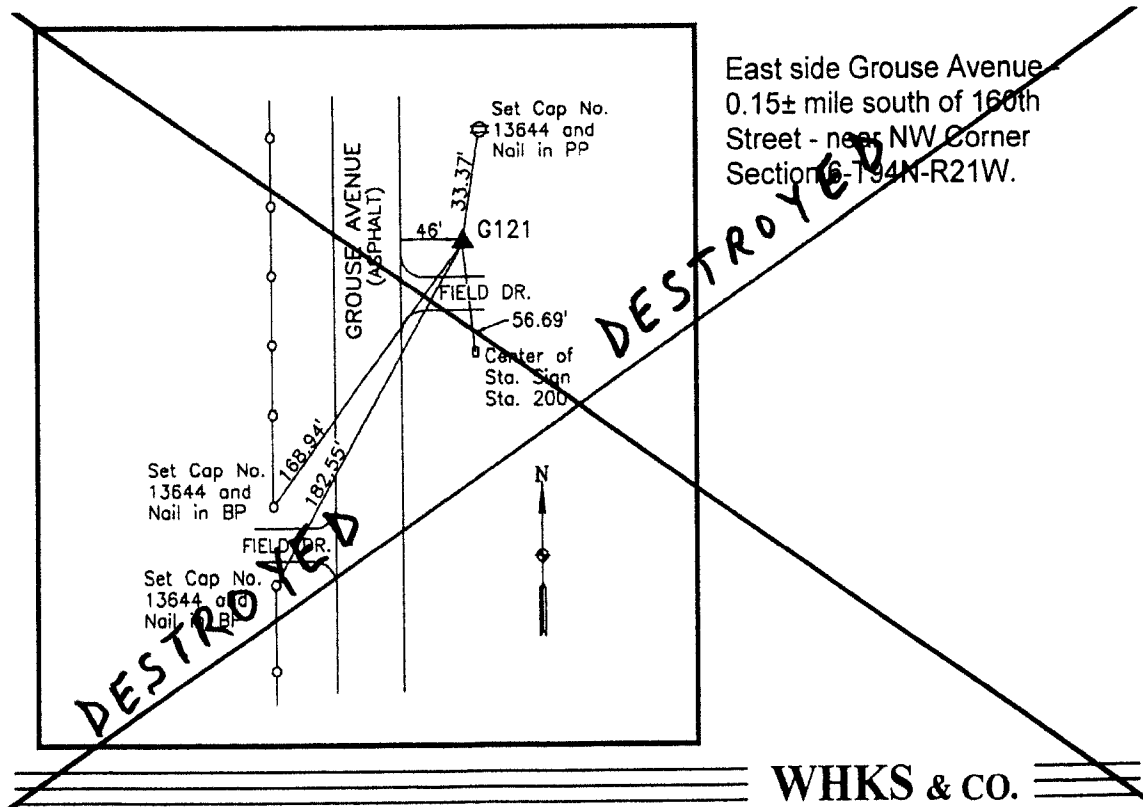
Northing: **3824874.73**sft Easting: **4953608.71**sft

Orthometric Height: **1208.14**sft Ellipsoid Height: **1116.22**sft **Geoid99**

Latitude: **N42°59'34.07037"** Longitude: **W93°22'44.58856"**

Mapping Angle: **0°04'55"** Combination Scale Factor: **0.999908190**

Monument Type: 5/8" x 6'-0" long aluminum rod with cap stamped G121 and NGS style access cover 2" deep.



This document was prepared by DCI on 09-30-2013 for use by Cerro Gordo County, Iowa.