

Cerro Gordo County, Iowa
 Iowa North Zone (1401)
 Horiz. Datum: **NAD83(NA2011)**
 Vert. Datum: NAVD 1988
 US Survey Feet
2013

Point Name: **122**

Designation: G122 (Set by WHKS & Co. in 2002)

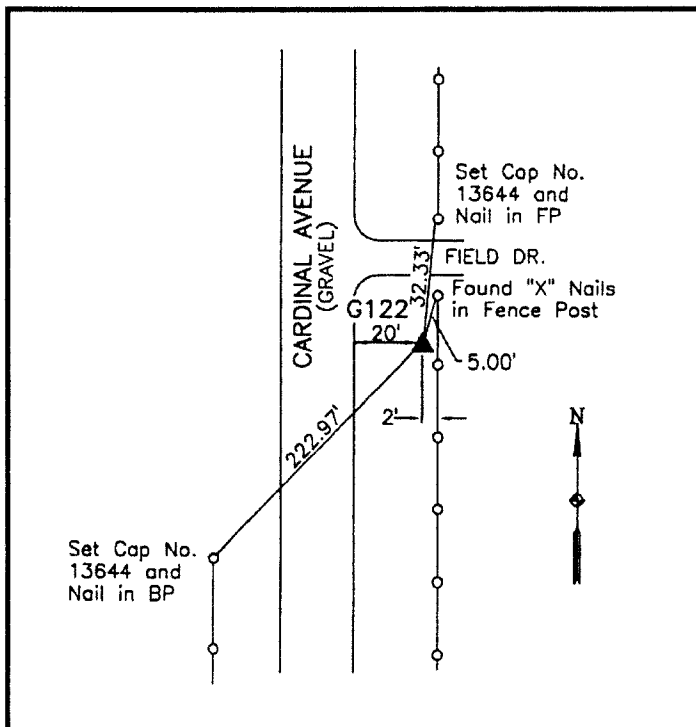
Northing: **3828527.88sft** Easting: **4932529.80sft**

Orthometric Height: **1264.87sft** Ellipsoid Height: **1172.55sft** **Geoid12A**

Latitude: **N43°00'10.35538"** Longitude: **W93°27'28.19703"**

Mapping Angle: **0°01'43"** Combination Scale Factor: **0.999906511**

Monument Type: 5/8" x 6'-0" long aluminum rod with cap stamped G122 and NGS style access cover 3" deep.



On east side of Cardinal Avenue - 0.45± mile south of 170th Street - 20'± south of field entrance - 200'± north of West 1/4 Corner of Section 33-T95N-R22W -.

WHKS & CO.

This document was prepared by DCI on 09-30-2013 for use by Cerro Gordo County, Iowa.