

Cerro Gordo County, Iowa  
Iowa North Zone (1401)  
Horiz. Datum: **NAD83(NA2011)**  
Vert. Datum: NAVD 1988  
US Survey Feet  
**2013**

Point Name: **127**

**Designation:** G127 (Set by WHKS & Co. in 2002)

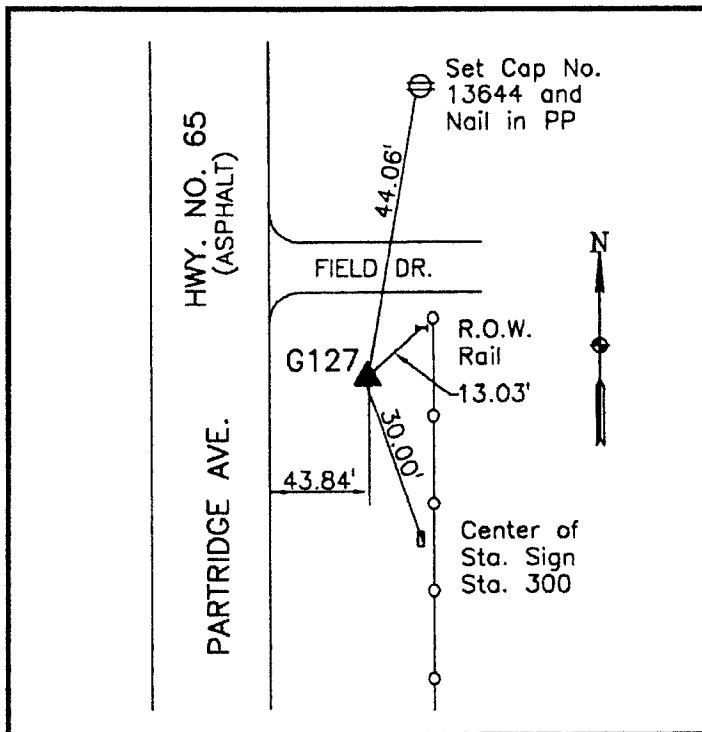
Northing: **3841050.42sft** Easting: **5001115.89sft**

Orthometric Height: **1164.43sft** Ellipsoid Height: **1071.05sft** **Geoid12A**

Latitude: **N43°02'12.68069"** Longitude: **W93°12'04.57739"**

Mapping Angle: **0°12'09"** Combination Scale Factor: **0.999914996**

**Monument Type:** 5/8" x 6'-0" long aluminum rod with cap stamped G127 and NGS style access cover 1" deep.



On east Hwy 65 - 300'± south of 190th Street - 30'± south of field entrance - near NW Corner Section 22-T95N-R20W.

**WHKS & CO.**

*This document was prepared by DCI on 09-30-2013 for use by Cerro Gordo County, Iowa.*