

Cerro Gordo County, Iowa
Iowa North Zone (1401)
Horiz. Datum: **NAD83(NA2011)**
Vert. Datum: NAVD 1988
US Survey Feet
2013

Point Name: **130**

Designation: G130 (Set by WHKS & Co. in 2002)

Northing: **3857938.13sft** Easting: **5032614.77sft**

Orthometric Height: **1149.86sft** Ellipsoid Height: **1053.69sft** **Geoid12A**

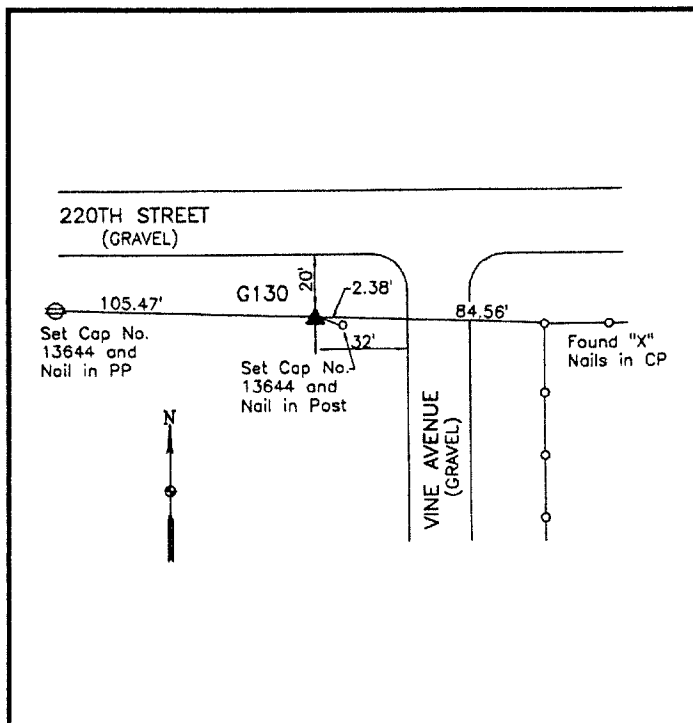
Latitude: **N43°04'58.16879"**

Longitude: **W93°04'59.31831"**

Mapping Angle: **0°16'57"**

Combination Scale Factor: **0.999921314**

Monument Type: 5/8" x 6'-0" long aluminum rod with cap stamped G130 and NGS style access cover 1" deep.



SW Corner Vine Avenue and
220th Street - 3'± west of wood
post - near NW Corner Section
3-T95N-R19W.

WHKS & CO.

This document was prepared by DCI on 09-30-2013 for use by Cerro Gordo County, Iowa.