

Cerro Gordo County, Iowa
Iowa North Zone (1401)
Horiz. Datum: **NAD83(NA2011)**
Vert. Datum: NAVD 1988
US Survey Feet
2013

Point Name: 131

Designation: G131 (Set by WHKS & Co. in 2002)

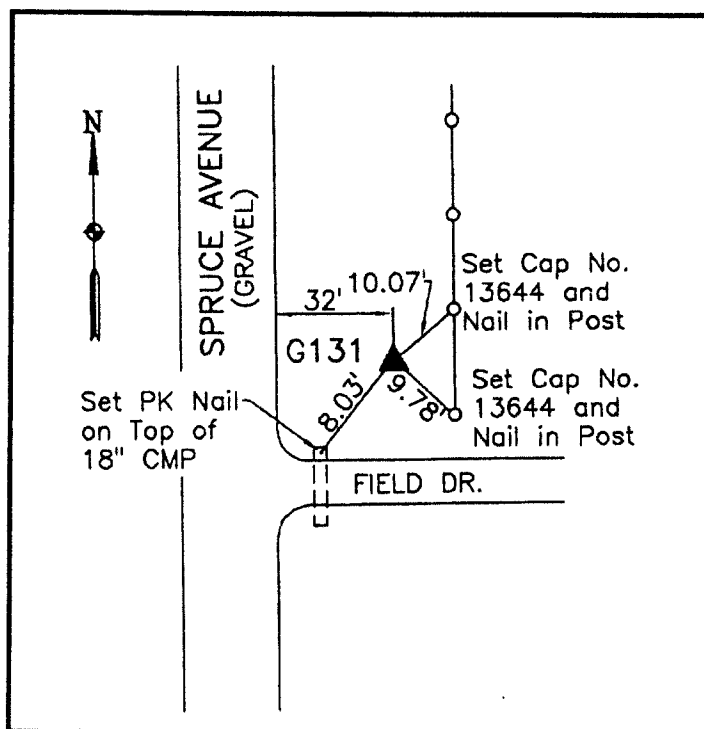
Northing: **3856604.39sft** Easting: **5016923.52sft**

Orthometric Height: **1181.30sft** Ellipsoid Height: **1086.77sft** **Geoid12A**

Latitude: **N43°04'45.70552"** Longitude: **W93°08'30.83723"**

Mapping Angle: **0°14'34"** Combination Scale Factor: **0.999919300**

Monument Type: 5/8" x 6'-0" long aluminum rod with cap stamped G131 and NGS style access cover 3" deep.



East side Spruce Avenue -
1000'± south of 220th Street -
20'± north of field entrance -
near NW Corner Section 6-
T95N-R19W.

=====
WHKS & CO. =====

This document was prepared by DCI on 09-30-2013 for use by Cerro Gordo County, Iowa.