

Cerro Gordo County, Iowa
Iowa North Zone (1401)
Horiz. Datum: **NAD83(NA2011)**
Vert. Datum: NAVD 1988
US Survey Feet
2013

Point Name: **132**

Designation: G132 (Set by WHKS & Co. in 2002)

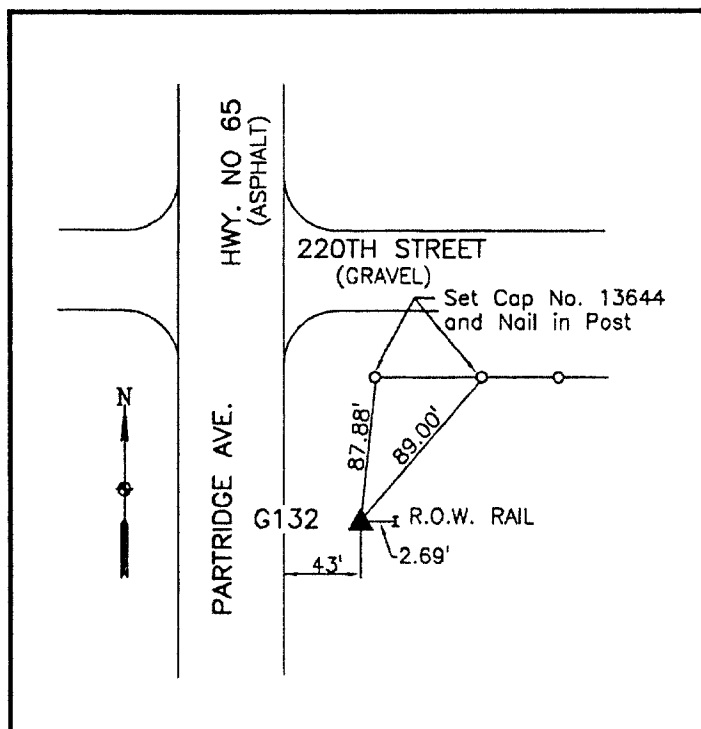
Northing: **3857664.73sft** Easting: **5001039.85sft**

Orthometric Height: **1208.99sft** Ellipsoid Height: **1115.82sft** **Geoid12A**

Latitude: **N43°04'56.78814"** Longitude: **W93°12'04.81087"**

Mapping Angle: **0°12'09"** Combination Scale Factor: **0.999918301**

Monument Type: 5/8" x 6'-0" long aluminum rod with cap stamped G132 and NGS style access cover 2" deep.



East side Partridge Avenue -
125'± south of 220th Street -
2'± west of a row rail - near NW
Corner Section 3-T95N-R20W.

WHKS & CO.

This document was prepared by DCI on 09-30-2013 for use by Cerro Gordo County, Iowa.