

Cerro Gordo County, Iowa  
Iowa North Zone (1401)  
Horiz. Datum: **NAD83(NA2011)**  
Vert. Datum: NAVD 1988  
US Survey Feet  
**2013**

Point Name: **133**

**Designation:** G133 (Set by WHKS & Co. in 2002)

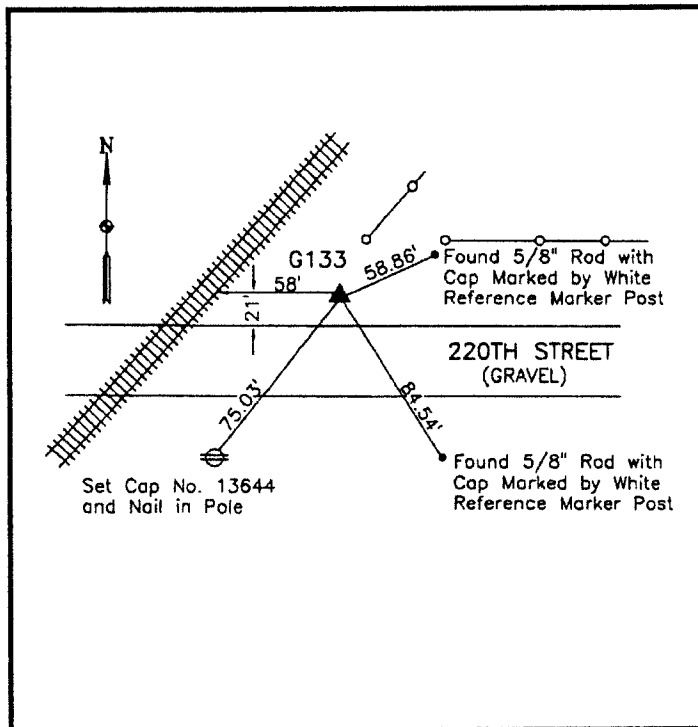
Northing: **3857842.76sft** Easting: **4985064.34sft**

Orthometric Height: **1214.94sft** Ellipsoid Height: **1122.52sft** **Geoid12A**

Latitude: **N43°04'59.04822"** Longitude: **W93°15'40.07699"**

Mapping Angle: **0°09'43"** Combination Scale Factor: **0.999918061**

**Monument Type:** 5/8" x 6'-0" long aluminum rod with cap stamped G133 and NGS style access cover 1" deep.



North side of 220th Street -  
50'± east of centerline  
railroad - 80'± west of NW  
Corner Section 6-T95N-R20W.

**WHKS & CO.**

*This document was prepared by DCI on 09-30-2013 for use by Cerro Gordo County, Iowa.*