

Cerro Gordo County, Iowa
Iowa North Zone (1401)
Horiz. Datum: **NAD83(NA2011)**
Vert. Datum: NAVD 1988
US Survey Feet
2013

Point Name: **136**

Designation: G136 (Set by WHKS & Co. in 2002)

Northing: **3857699.36sft** Easting: **4938279.80sft**

Orthometric Height: **1292.14sft** Ellipsoid Height: **1199.07sft** **Geoid12A**

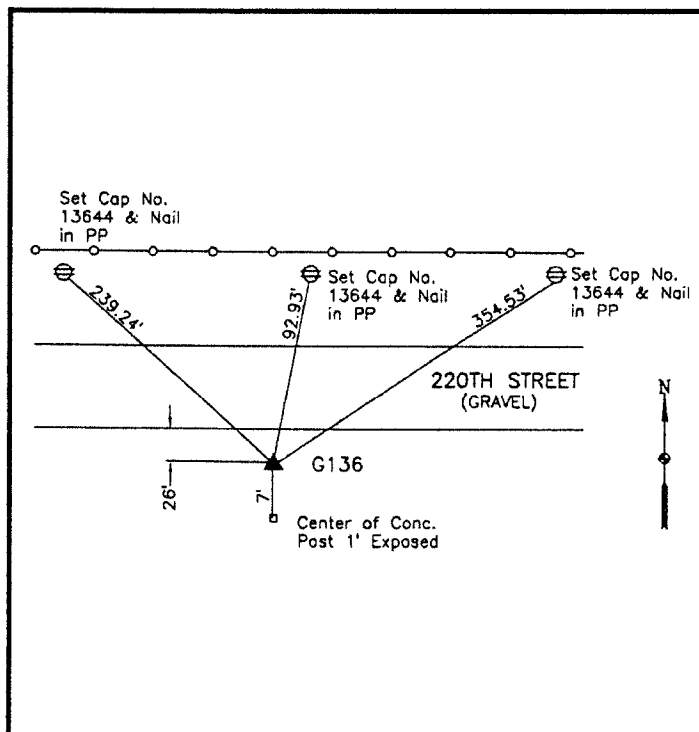
Latitude: **N43°04'58.45894"**

Longitude: **W93°26'10.51778"**

Mapping Angle: **0°02'36"**

Combination Scale Factor: **0.999914388**

Monument Type: 5/8" x 6'-0" long aluminum rod with cap stamped G136 and NGS style access cover 2" deep.



South side 220th Street - 500'±
east of Dogwood Avenue - 3'±
west of a concrete monument
post - near NW Corner Section
3-T95N-R22W.

WHKS & CO.

This document was prepared by DCI on 09-30-2013 for use by Cerro Gordo County, Iowa.