

Cerro Gordo County, Iowa  
Iowa North Zone (1401)  
Horiz. Datum: **NAD83(NA2011)**  
Vert. Datum: NAVD 1988  
US Survey Feet  
**2013**

Point Name: **137**

**Designation:** G137 (Set by WHKS & Co. in 2002)

Northing: **3877589.43sft** Easting: **4937775.86sft**

Orthometric Height: **1246.78sft** Ellipsoid Height: **1152.93sft** **Geoid12A**

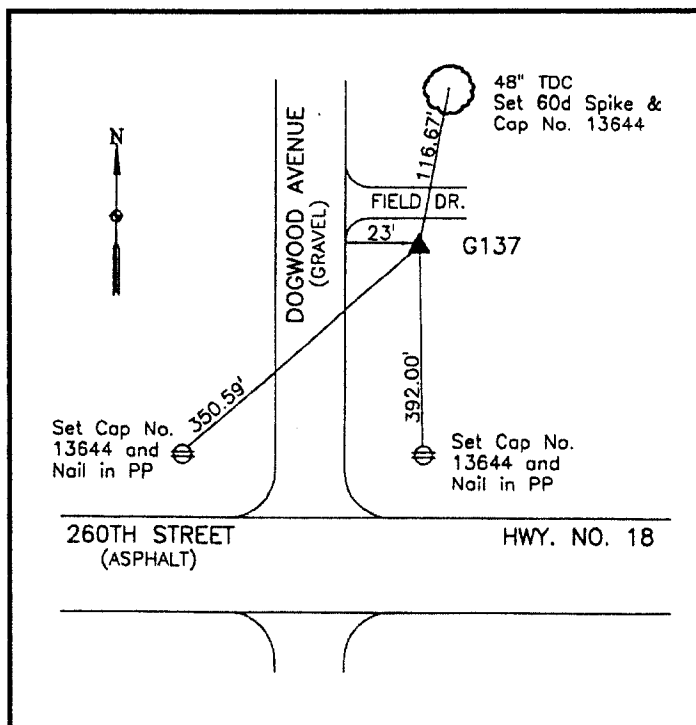
Latitude: **N43°08'14.92135"**

Longitude: **W93°26'17.11213"**

Mapping Angle: **0°02'31"**

Combination Scale Factor: **0.999923946**

**Monument Type:** 5/8" x 6'-0" long aluminum rod with cap stamped G137 and NGS style access cover 2" deep.



On east side Dogwood Avenue - 400± north of U.S. Highway No. 18 - 20± south of field entrance - near NW Corner Section 15-T96N-R22W.

**WHKS & CO.**

*This document was prepared by DCI on 09-30-2013 for use by Cerro Gordo County, Iowa.*