

Cerro Gordo County, Iowa
 Iowa North Zone (1401)
 Horiz. Datum: **NAD83(NA2011)**
 Vert. Datum: NAVD 1988
 US Survey Feet
2013

Point Name: **138**

Designation: G138 (Set by WHKS & Co. in 2002)

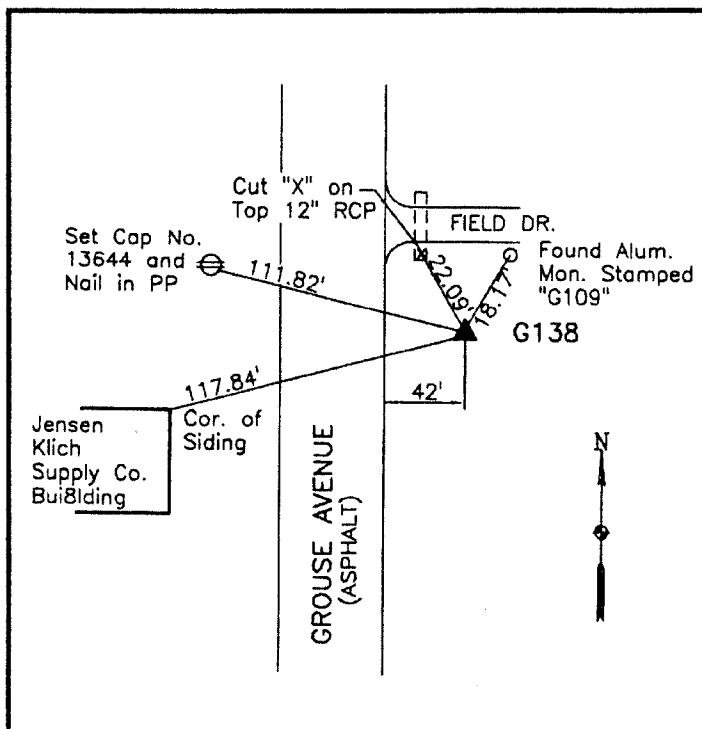
Northing: **3873209.53sft** Easting: **4953681.82sft**

Orthometric Height: **1224.21sft** Ellipsoid Height: **1131.30sft** **Geoid12A**

Latitude: **N43°07'31.48997"** Longitude: **W93°22'42.67025"**

Mapping Angle: **0°04'56"** Combination Scale Factor: **0.999923273**

Monument Type: 5/8" x 6'-0" long aluminum rod with cap stamped G138 and NGS style access cover 1" deep.



East side of South 8th Street (Grouse Avenue) - 300'± south of 12th Avenue South - 20'± south of a field entrance - 15'± south of existing City of Clear Lake GPS Monument - near NW Corner Section 19-T96N-R21W.

WHKS & CO.