

**Cerro Gordo County, Iowa**  
 Iowa North Zone (1401)  
 Horiz. Datum: **NAD83(NA2011)**  
 Vert. Datum: NAVD 1988  
 US Survey Feet  
**2013**

Point Name: **139**

**Designation:** G139 (Set by WHKS & Co. in 2002)

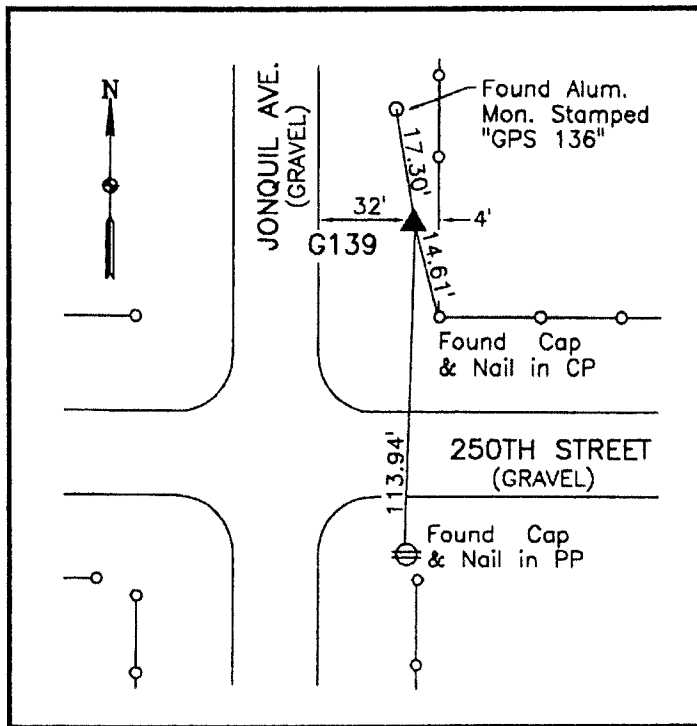
Northing: **3873668.39sft** Easting: **4969340.67sft**

Orthometric Height: **1182.99sft** Ellipsoid Height: **1090.46sft** **Geoid12A**

Latitude: **N43°07'35.74632"** Longitude: **W93°19'11.50440"**

Mapping Angle: **0°07'20"** Combination Scale Factor: **0.999925387**

**Monument Type:** 5/8" x 6'-0" long aluminum rod with cap stamped G139 and NGS style access cover 2" deep.



NE Corner intersection of  
 250th Street and Jonquil  
 Avenue - 10'± north and 2'±  
 west of a corner post - near  
 NW Corner Section 22-T96N-  
 R21W.

=====  
**WHKS & CO.** =====

*This document was prepared by DCI on 09-30-2013 for use by Cerro Gordo County, Iowa.*