

Cerro Gordo County, Iowa
Iowa North Zone (1401)
Horiz. Datum: **NAD83(NA2011)**
Vert. Datum: NAVD 1988
US Survey Feet
2013

Point Name: **141**

Designation: G141 (Set by WHKS & Co. in 2002)

Northing: **3873452.66sft** Easting: **5000848.80sft**

Orthometric Height: **1182.76sft** Ellipsoid Height: **1089.69sft** **Geoid12A**

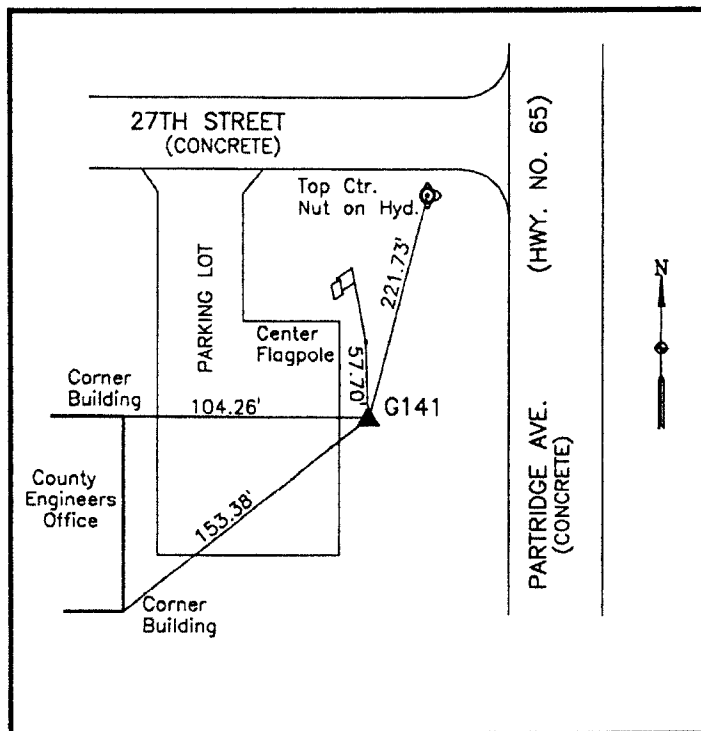
Latitude: **N43°07'32.73510"**

Longitude: **W93°12'06.63501"**

Mapping Angle: **0°12'07"**

Combination Scale Factor: **0.999925306**

Monument Type: 5/8" x 6'-0" long aluminum rod with cap stamped G141 and NGS style access cover 1" deep.



West side of Partridge Avenue - 120± east of NE Corner of County Engineer's Office Building - near NW Corner Section 22-T96N-R20W.

WHKS & CO.

This document was prepared by DCI on 09-30-2013 for use by Cerro Gordo County, Iowa.