

Cerro Gordo County, Iowa
Iowa North Zone (1401)
Horiz. Datum: **NAD83(NA2011)**
Vert. Datum: NAVD 1988
US Survey Feet
2013

Point Name: **142**

Designation: G142 (Set by WHKS & Co. in 2002)

Northing: **3873609.36sft** Easting: **5016885.28sft**

Orthometric Height: **1082.86sft** Ellipsoid Height: **988.63sft** **Geoid12A**

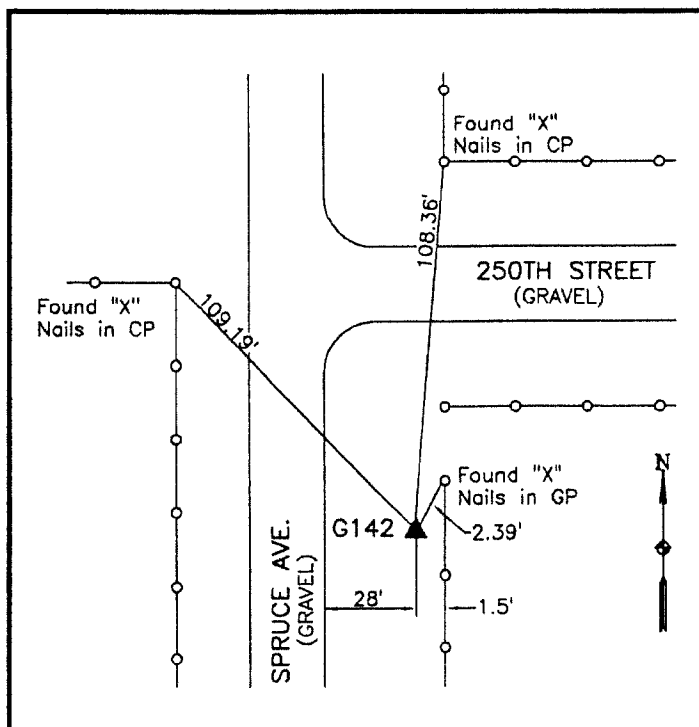
Latitude: **N43°07'33.66796"**

Longitude: **W93°08'30.38150"**

Mapping Angle: **0°14'34"**

Combination Scale Factor: **0.999930164**

Monument Type: 5/8" x 6'-0" long aluminum rod with cap stamped G142 and NGS style access cover 3" deep.



SE Corner intersection of
250th Street and Spruce
Avenue - south side of field
entrance - 3'± west and 2'±
south of gate post - near NW
Corner Section 19-T96N-
R19W.

WHKS & CO.

This document was prepared by DCI on 09-30-2013 for use by Cerro Gordo County, Iowa.