

Cerro Gordo County, Iowa  
Iowa North Zone (1401)  
Horiz. Datum: **NAD83(NA2011)**  
Vert. Datum: NAVD 1988  
US Survey Feet  
**2013**

Point Name: **143**

**Designation:** G143 (Set by WHKS & Co. in 2002)

Northing: **3873809.94sft** Easting: **5032655.83sft**

Orthometric Height: **1094.38sft** Ellipsoid Height: **998.62sft** **Geoid12A**

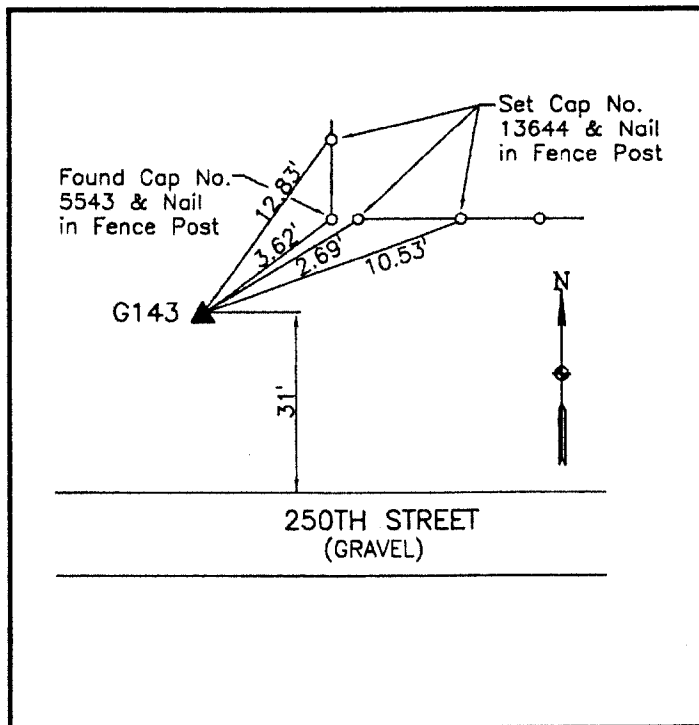
Latitude: **N43°07'34.93463"**

Longitude: **W93°04'57.70929"**

Mapping Angle: **0°16'58"**

Combination Scale Factor: **0.999929737**

**Monument Type:** 5/8" x 6'-0" long aluminum rod with cap stamped G143 and NGS style access cover 1" deep.



North side of 250th Street - 2'± south and 2'± west of a corner post - near NW Corner Section 22-T96N-R19W.

**WHKS & CO.**

*This document was prepared by DCI on 09-30-2013 for use by Cerro Gordo County, Iowa.*