

Cerro Gordo County, Iowa
 Iowa North Zone (1401)
 Horiz. Datum: **NAD83(NA2011)**
 Vert. Datum: NAVD 1988
 US Survey Feet
2013

Point Name: **144**

Designation: G144 (Set by WHKS & Co. in 2002)

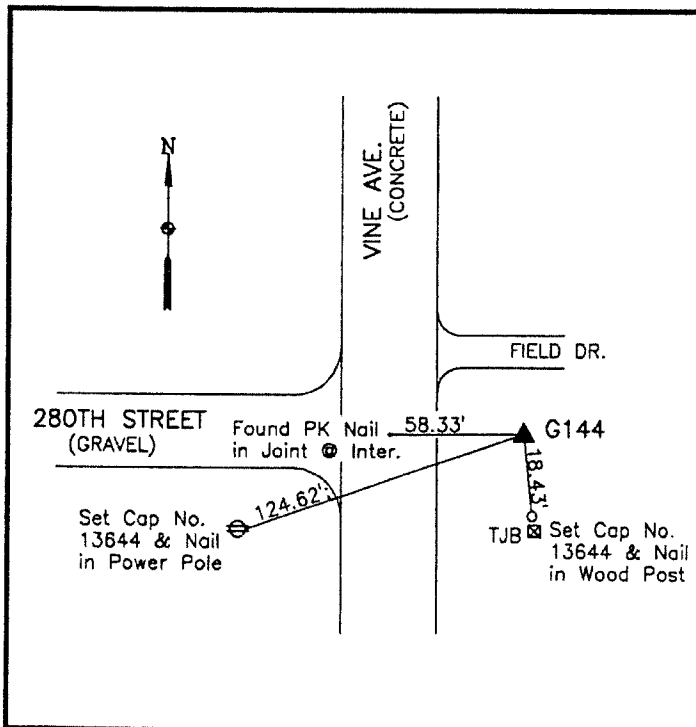
Northing: **3889450.18sft** Easting: **5032475.00sft**

Orthometric Height: **1131.03sft** Ellipsoid Height: **1035.66sft** **Geoid12A**

Latitude: **N43°10'09.42186"** Longitude: **W93°04'59.10765"**

Mapping Angle: **0°16'57"** Combination Scale Factor: **0.999934248**

Monument Type: 5/8" x 6'-0" long aluminum rod with cap stamped G144 and NGS style access cover 2" deep.



East side intersection of 280th Street and Vine Avenue - south side of a field entrance - 4'± west of a post mounted rain gauge - near NW Corner Section 3-T96N-R19W.

WHKS & CO.

This document was prepared by DCI on 09-30-2013 for use by Cerro Gordo County, Iowa.