

Cerro Gordo County, Iowa
Iowa North Zone (1401)
Horiz. Datum: **NAD83(NA2011)**
Vert. Datum: NAVD 1988
US Survey Feet
2013

Point Name: **145**

Designation: G145 (Set by WHKS & Co. in 2002)

Northing: **3889360.56sft** Easting: **5016400.43sft**

Orthometric Height: **1117.64sft** Ellipsoid Height: **1023.66sft** **Geoid12A**

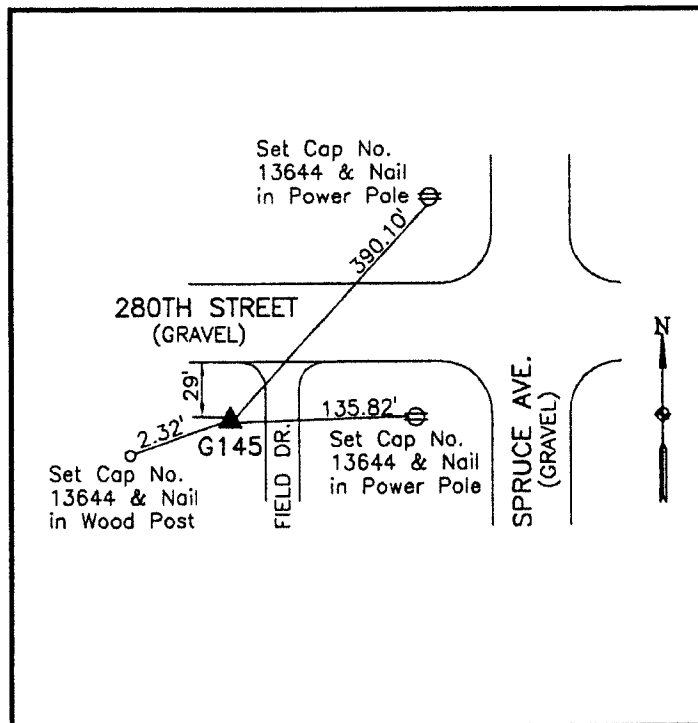
Latitude: **N43°10'09.26316"**

Longitude: **W93°08'36.02334"**

Mapping Angle: **0°14'30"**

Combination Scale Factor: **0.999934814**

Monument Type: 5/8" x 6'-0" long aluminum rod with cap stamped G145 and NGS style access cover 1" deep.



South side of 280th Street -
350± west of Spruce Avenue -
west side of field entrance - 2'±
east and 2'± north of a wood
fence post - near NW Corner
Section 6-T96N-R19W.

WHKS & CO.

This document was prepared by DCI on 09-30-2013 for use by Cerro Gordo County, Iowa.