

Cerro Gordo County, Iowa
Iowa North Zone (1401)
Horiz. Datum: **NAD83(NA2011)**
Vert. Datum: NAVD 1988
US Survey Feet
2013

Point Name: **146**

Designation: G146 (Set by WHKS & Co. in 2002)

Northing: **3889357.83**sft Easting: **5000270.71**sft

Orthometric Height: **1126.00**sft Ellipsoid Height: **1032.94**sft **Geoid12A**

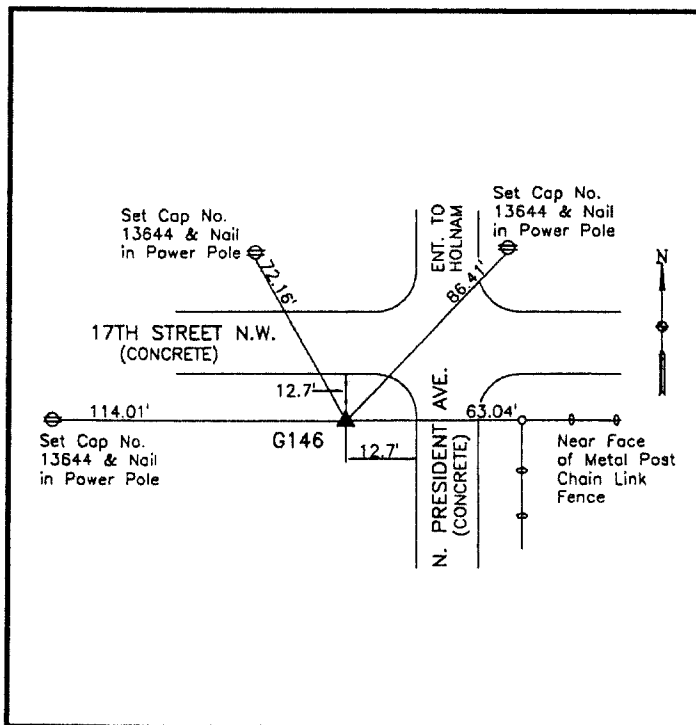
Latitude: **N43°10'09.85132"**

Longitude: **W93°12'13.67891"**

Mapping Angle: **0°12'03"**

Combination Scale Factor: **0.999934396**

Monument Type: 5/8" x 6'-0" long aluminum rod with cap stamped G146 and NGS style access cover 1" deep.



SW Corner of 17th Street NW
and North President Avenue -
1000'± west of NW Corner
Section 3-T96N-R20W.

WHKS & CO.

This document was prepared by DCI on 09-30-2013 for use by Cerro Gordo County, Iowa.