

Cerro Gordo County, Iowa
Iowa North Zone (1401)
Horiz. Datum: **NAD83(NA2011)**
Vert. Datum: NAVD 1988
US Survey Feet
2013

Point Name: **148**

Designation: G148 (Set by WHKS & Co. in 2002)

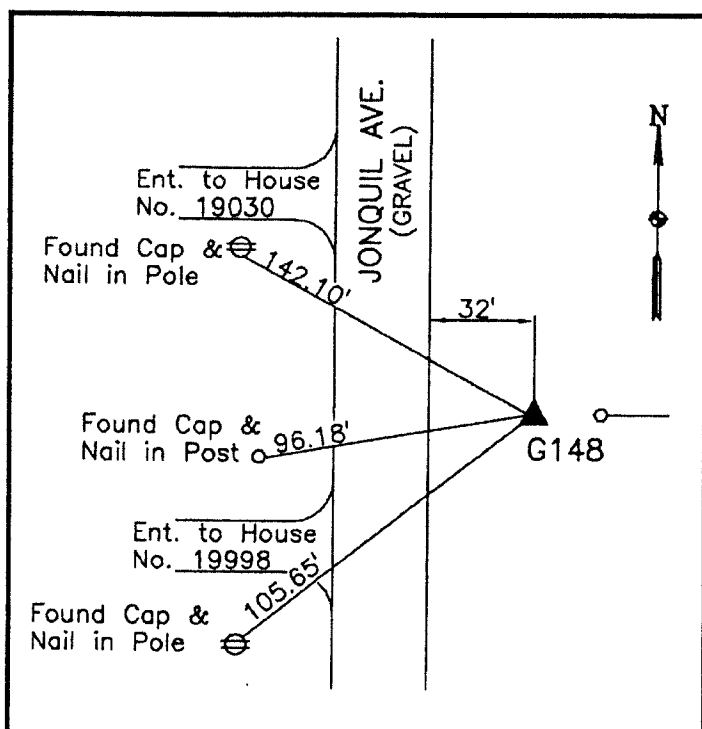
Northing: **3889371.77sft** Easting: **4969324.09sft**

Orthometric Height: **1207.95sft** Ellipsoid Height: **1115.05sft** **Geoid12A**

Latitude: **N43°10'10.85025"** Longitude: **W93°19'11.27657"**

Mapping Angle: **0°07'20"** Combination Scale Factor: **0.999930521**

Monument Type: 5/8" x 6'-0" long aluminum rod with cap stamped G148 and NGS style access cover 1" deep.



East side Jonquil Avenue -
0.5± mile north of 275th
Street - 5± north of 1/4 line
fence - near NW Corner
Section 3-T96N-R21W.

WHKS & CO.

This document was prepared by DCI on 09-30-2013 for use by Cerro Gordo County, Iowa.