

Cerro Gordo County, Iowa
Iowa North Zone (1401)
Horiz. Datum: **NAD83(NA2011)**
Vert. Datum: NAVD 1988
US Survey Feet
2013

Point Name: **149**

Designation: G149 (Set by WHKS & Co. in 2002)

Northing: **3890520.16sft** Easting: **4953605.32sft**

Orthometric Height: **1231.16sft** Ellipsoid Height: **1137.69sft** **Geoid12A**

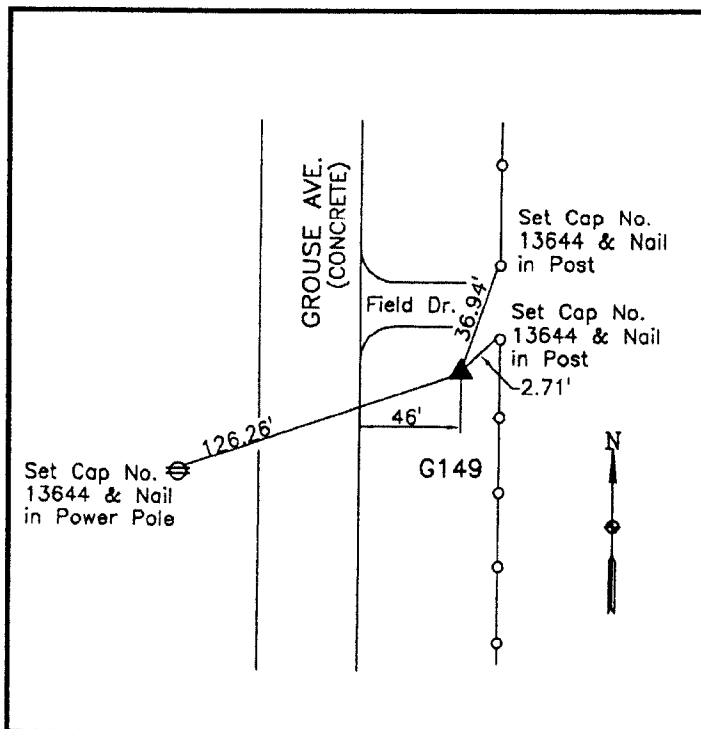
Latitude: **N43°10'22.46981"**

Longitude: **W93°22'43.36687"**

Mapping Angle: **0°04'56"**

Combination Scale Factor: **0.999929937**

Monument Type: 5/8" x 6'-0" long aluminum rod with cap stamped G149 and NGS style access cover 1" deep.



East side Grouse Avenue -
south side of field entrance -
2'± west of gate post - 0.25±
mile north of NW Corner
Section 6-T96N-R21W.

WHKS & CO.

This document was prepared by DCI on 09-30-2013 for use by Cerro Gordo County, Iowa.