

Cerro Gordo County, Iowa
Iowa North Zone (1401)
Horiz. Datum: **NAD83(NA2011)**
Vert. Datum: NAVD 1988
US Survey Feet
2013

Point Name: **150**

Designation: G150 (Set by WHKS & Co. in 2002)

Northing: **3892045.87sft** Easting: **4937701.52sft**

Orthometric Height: **1222.90sft** Ellipsoid Height: **1128.52sft** **Geoid12A**

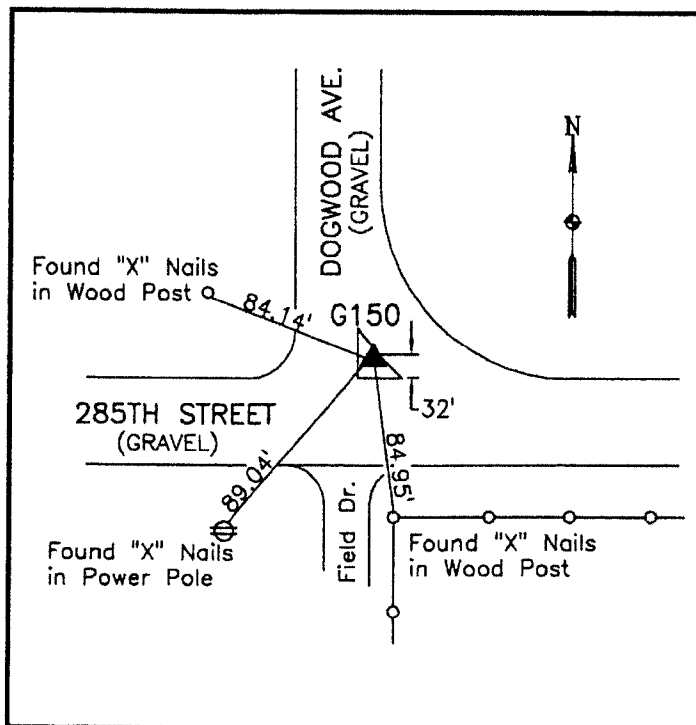
Latitude: **N43°10'37.70921"**

Longitude: **W93°26'17.97262"**

Mapping Angle: **0°02'30"**

Combination Scale Factor: **0.999931029**

Monument Type: 5/8" x 6'-0" long aluminum rod with cap stamped G150 and NGS style access cover 2" deep.



In grass island at intersection of 285th Street and Dogwood Avenue - 50'± north of 285th Street - 50'± east of Dogwood Avenue - near West 1/4 Corner Section 34-T97N-R22W.

WHKS & CO.

This document was prepared by DCI on 09-30-2013 for use by Cerro Gordo County, Iowa.